

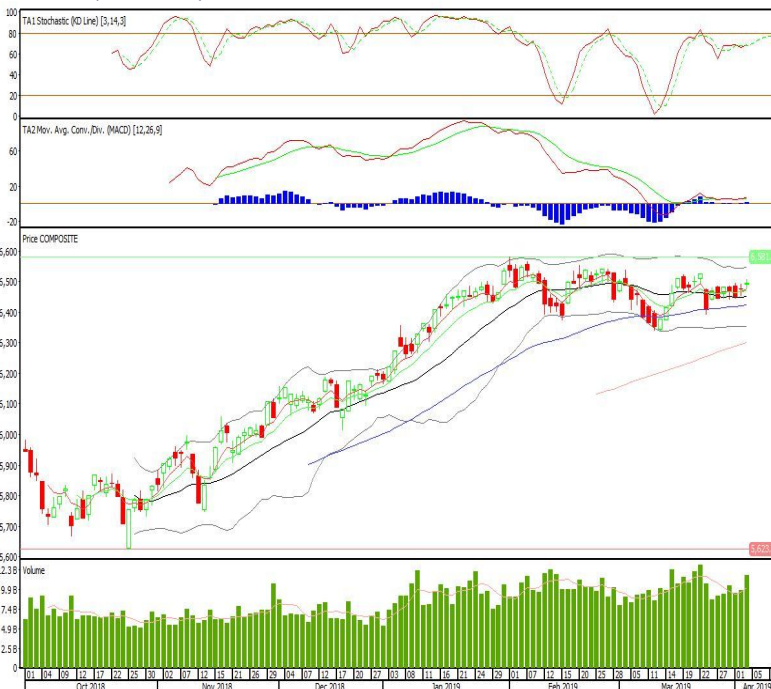
Technical Corner

IHSG

Range: 6.465–6.525

---Indeks ditutup di atas EMA5,10 dan membentuk pola doji yang merupakan sinyal indecision, stochastic golden cross dan MACD histogram divergence positif. Target kenaikan indeks pada level 6.525 kemudian 6.555 dengan *support* di level 6.465 dan 6.435.

IHSG (6.494)

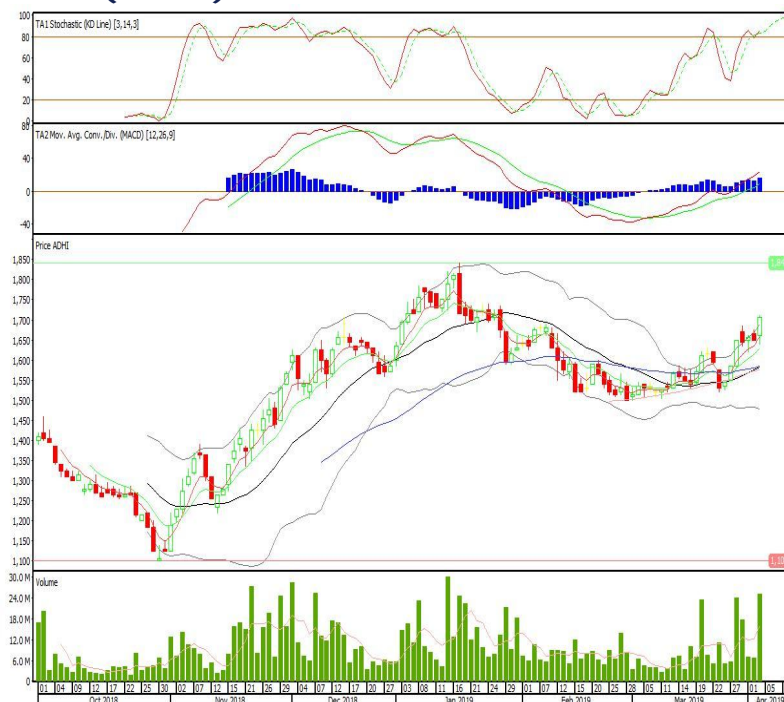


Adhi Karya

Rekomendasi: Buy

---Candle ditutup di atas EMA5,10 dan membentuk pola long white marubozu yang merupakan sinyal bullish continuation, stochastic overbought dan MACD histogram divergence positif. Target kenaikan harga pada level 1.755 kemudian 1.790 dengan *support* di level 1.660, *cut loss* jika *break* 1.610.

ADHI (1.705)

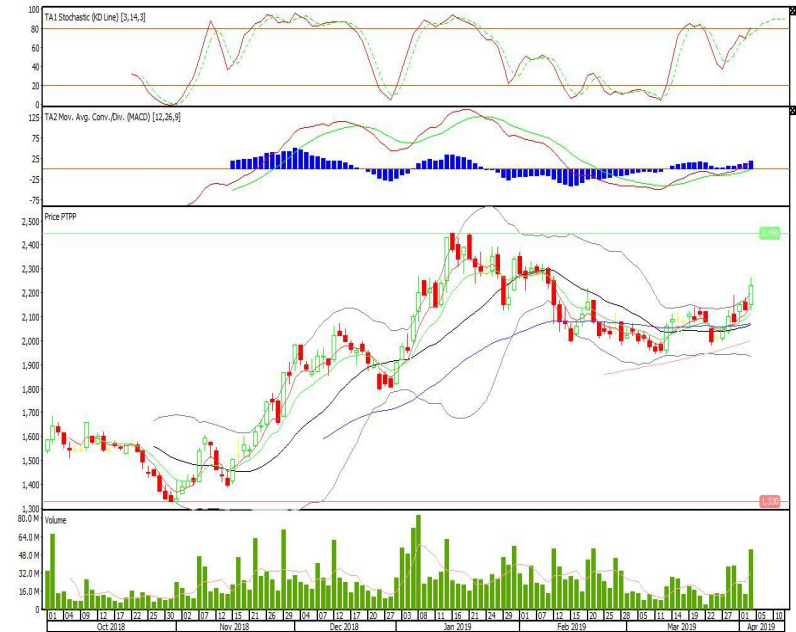


Pembangunan Perumahan

Rekomendasi: Buy

---Candle ditutup di atas EMA5,10 dan membentuk long white marubozu yang merupakan sinyal bullish continuation, stochastic overbought dan MACD histogram divergence positif. Target kenaikan harga pada level 2.310 kemudian 2.390 dengan *support* di level 2.150, *cut loss* jika break 2.070.

PTPP (2.230)



XL Axiata

Rekomendasi: Buy on Weakness

---Candle ditutup dibawah EMA5,10 dengan membentuk pola long black marubozu yang merupakan sinyal bearish continuation, stochastic netral, MACD histogram divergence negatif. Target harga beli pada level 2.590 dengan *resist* di level 2.670 kemudian 2.710.

EXCL (2.630)

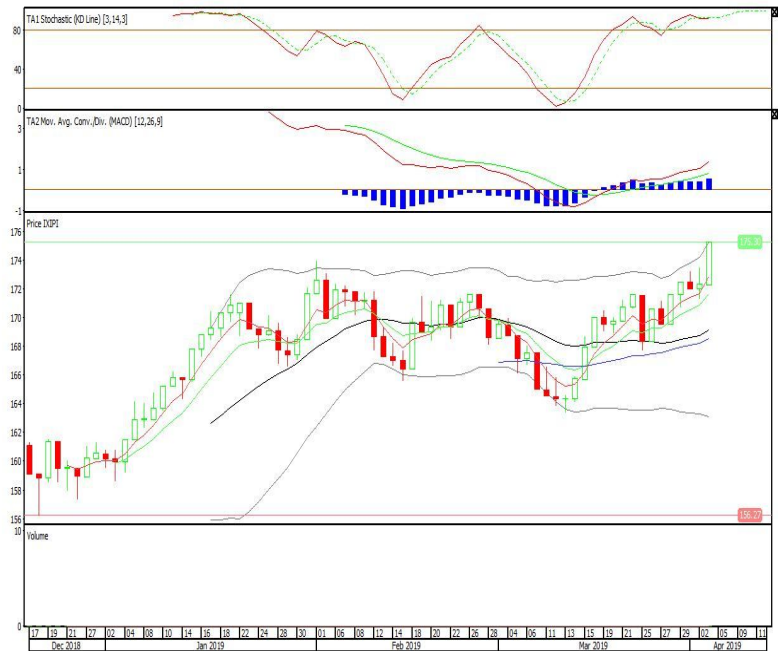


Premier ETF PEFINDO i-Grade

Rekomendasi: Buy

---Candle ditutup di atas EMA5,10 dengan membentuk pola white marubozu yang merupakan sinyal bullish continuation, stochastic overbought, MACD histogram divergence positif. Target kenaikan harga pada level 178 kemudian 181 dengan *support* di level 172, *cut loss* jika *break* 169.

XIPI (175)

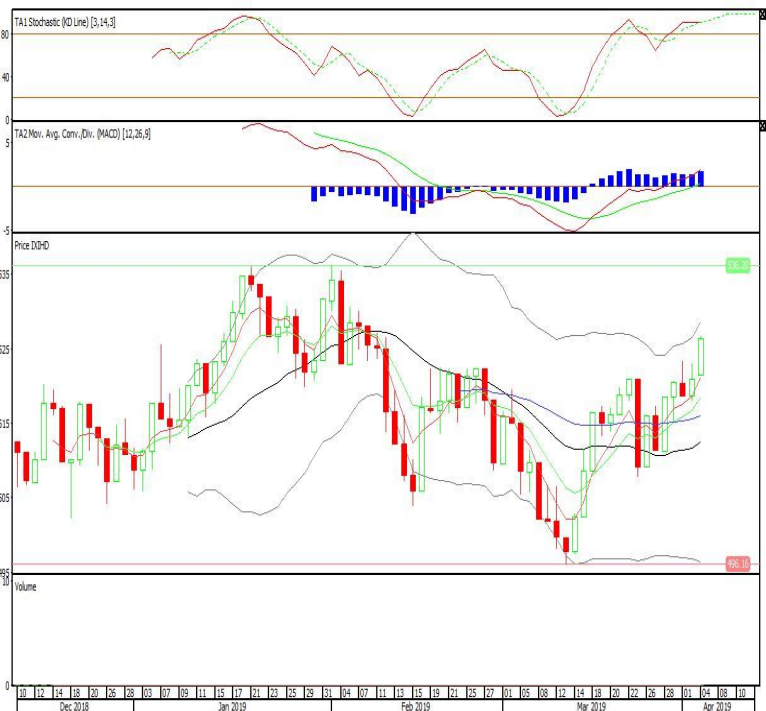


Premier ETF IDX High Dividend 20

Rekomendasi: Buy

---Candle ditutup di atas EMA5,10 dengan membentuk pola white opening marubozu yang merupakan sinyal bullish continuation, stochastic overbought, MACD histogram divergence positif. Target kenaikan harga pada level 531 kemudian 536 dengan *support* di level 521, *cut loss* jika *break* 516.

XIHD (526)

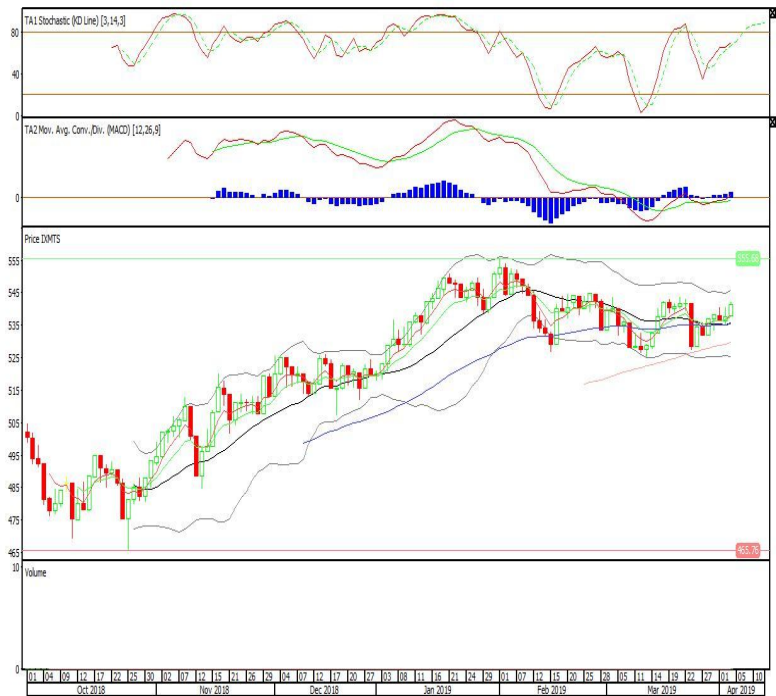


ETF MNC36 Likuid

Rekomendasi: Buy

---Candle ditutup diatas EMA5,10 dengan membentuk pola white opening marubozu yang merupakan sinyal bullish continuation, stochastic netral, MACD histogram divergence positif. Target kenaikan harga pada level 545 kemudian 549 dengan support di level 537, cut loss jika break 534.

XMTS (541)



Head Office**PT INDO PREMIER SEKURITAS**

Wisma GKBI 7/F Suite 718

Jl. Jend. Sudirman No.28

Jakarta 10210 - Indonesia

p +62.21.5793.1168

f +62.21.5793.1167

ANALYSTS CERTIFICATION.

The views expressed in this research report accurately reflect the analyst's personal views about any and all of the subject securities or issuers; and no part of the research analyst's compensation was, is, or will be, directly or indirectly, related to the specific recommendations or views expressed in the report.

DISCLAIMERS

This research is based on information obtained from sources believed to be reliable, but we do not make any representation or warranty nor accept any responsibility or liability as to its accuracy, completeness or correctness. Opinions expressed are subject to change without notice. This document is prepared for general circulation. Any recommendations contained in this document does not have regard to the specific investment objectives, financial situation and the particular needs of any specific addressee. This document is not and should not be construed as an offer or a solicitation of an offer to purchase or subscribe or sell any securities. PT. Indo Premier Sekuritas or its affiliates may seek or will seek investment banking or other business relationships with the companies in this report.