

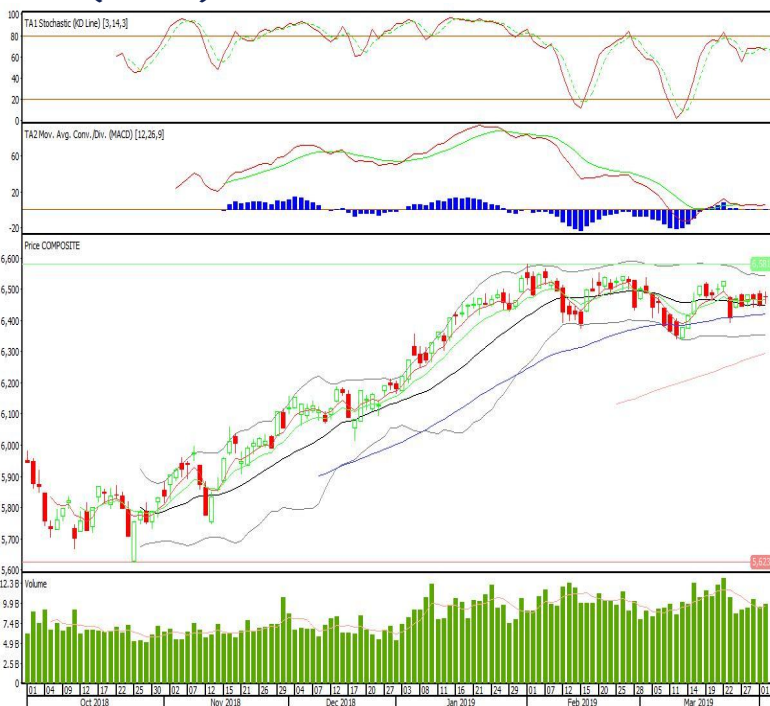
Technical Corner

IHSG

Range: 6.445–6.505

---Indeks ditutup di atas EMA5,10 dan membentuk pola doji yang merupakan sinyal indecision, stochastic netral dan MACD histogram convergence positif. Target kenaikan indeks pada level 6.505 kemudian 6.540 dengan *support* di level 6.445 dan 6.415.

IHSG (6.476)



Mitra Adiperkasa

Rekomendasi: Buy

---Candle ditutup di atas EMA5,10 dan membentuk pola long white marubozu yang merupakan sinyal bullish continuation, stochastic netral dan MACD histogram convergence negatif. Target kenaikan harga pada level 1.075 kemudian 1.110 dengan *support* di level 1.015, *cut loss* jika *break* 985.

MAPI (1.045)



Surya Semesta Internusa

Rekomendasi: Buy

---Candle ditutup di atas EMA5,10 dan membentuk pola white opening marubozu yang merupakan sinyal bullish continuation, stochastic netral dan MACD histogram convergence negatif. Target kenaikan harga pada level 575 kemudian 585 dengan *support* di level 555, *cut loss* jika *break* 545.

SSIA (565)



Kalbe Farma

Rekomendasi: Buy

---Candle ditutup diatas EMA5,10 dengan membentuk pola white closing marubozu yang merupakan sinyal bullish continuation, stochastic netral, MACD histogram divergence positif. Target kenaikan harga pada level 1.555 kemudian 1.585 dengan *support* di level 1.495, *cut loss* jika *break* 1.465.

KLBF (1.525)

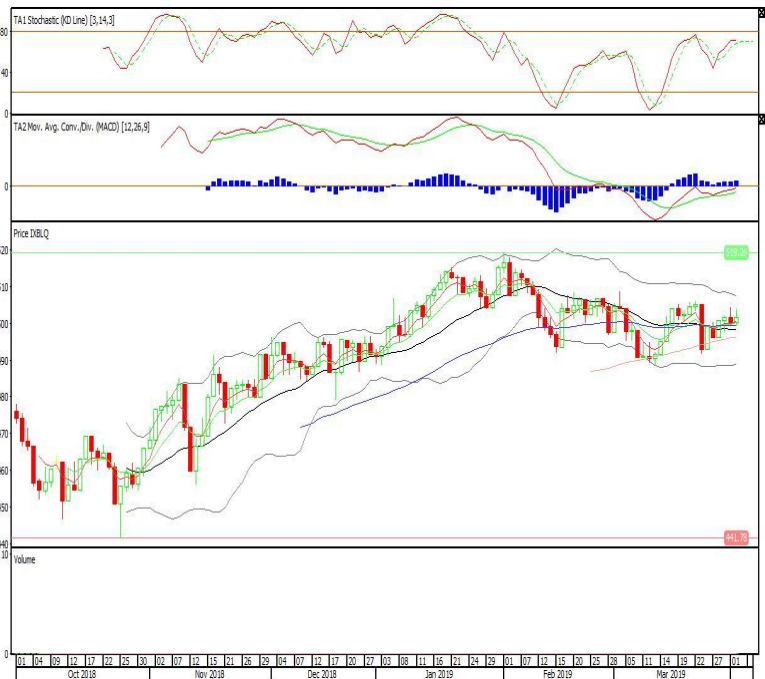


Batavia Smart Liquid ETF

Rekomendasi: Buy

---Candle ditutup di atas EMA5,10 dengan membentuk pola small bullish candle, stochastic netral, MACD histogram divergence positif. Target kenaikan harga pada level 503 kemudian 506 dengan *support* di level 498, *cut loss* jika *break* 496.

XBLQ (501)

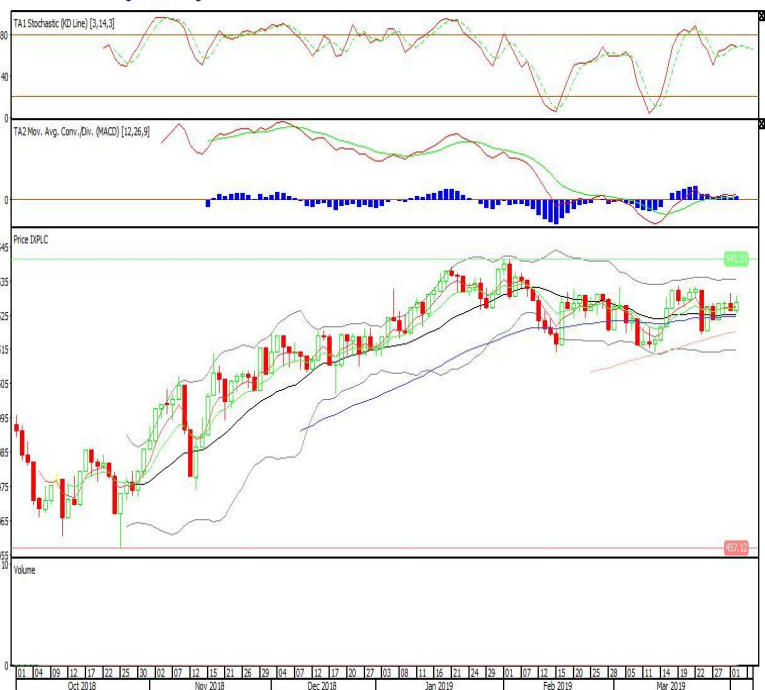


Pinnacle Indonesia Large-Cap ETF

Rekomendasi: Buy

---Candle ditutup di atas EMA5,10 dengan membentuk pola small bullish candle, stochastic netral, MACD histogram divergence positif. Target kenaikan harga pada level 530 kemudian 532 dengan *support* di level 526, *cut loss* jika *break* 524.

XPLC (528)

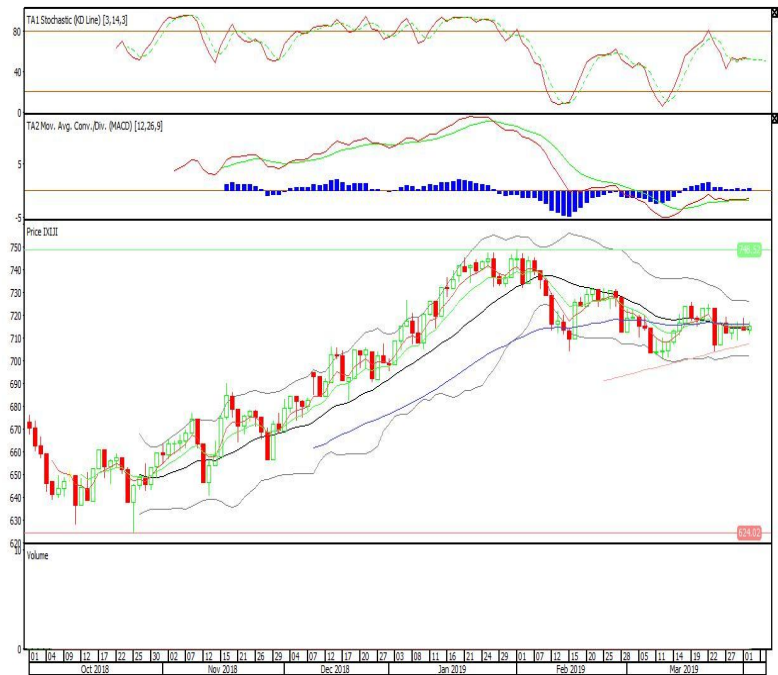


Premier ETF JII

Rekomendasi: Buy

---Candle ditutup tepat pada EMA5,10 dengan membentuk pola small bullish candle, stochastic netral, MACD histogram divergence positif. Target kenaikan harga pada level 717 kemudian 720 dengan support di level 711, cut loss jika break 708.

XIJI (715)



Head Office**PT INDO PREMIER SEKURITAS**

Wisma GKBI 7/F Suite 718

Jl. Jend. Sudirman No.28

Jakarta 10210 - Indonesia

p +62.21.5793.1168

f +62.21.5793.1167

ANALYSTS CERTIFICATION.

The views expressed in this research report accurately reflect the analyst's personal views about any and all of the subject securities or issuers; and no part of the research analyst's compensation was, is, or will be, directly or indirectly, related to the specific recommendations or views expressed in the report.

DISCLAIMERS

This research is based on information obtained from sources believed to be reliable, but we do not make any representation or warranty nor accept any responsibility or liability as to its accuracy, completeness or correctness. Opinions expressed are subject to change without notice. This document is prepared for general circulation. Any recommendations contained in this document does not have regard to the specific investment objectives, financial situation and the particular needs of any specific addressee. This document is not and should not be construed as an offer or a solicitation of an offer to purchase or subscribe or sell any securities. PT. Indo Premier Sekuritas or its affiliates may seek or will seek investment banking or other business relationships with the companies in this report.