

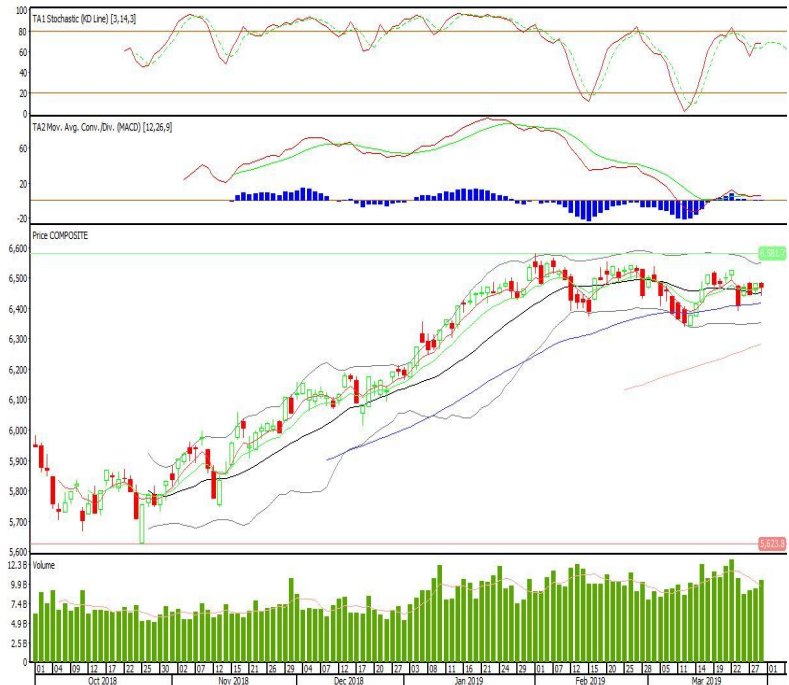
Technical Corner

IHSG

Range: 6.435–6.500

---Indeks ditutup di atas EMA5,10 dan membentuk pola small bearish candle, stochastic netral dan MACD histogram divergence negatif. Target kenaikan indeks pada level 6.500 kemudian 6.530 dengan *support* di level 6.435 kemudian 6.405.

IHSG (6.468)

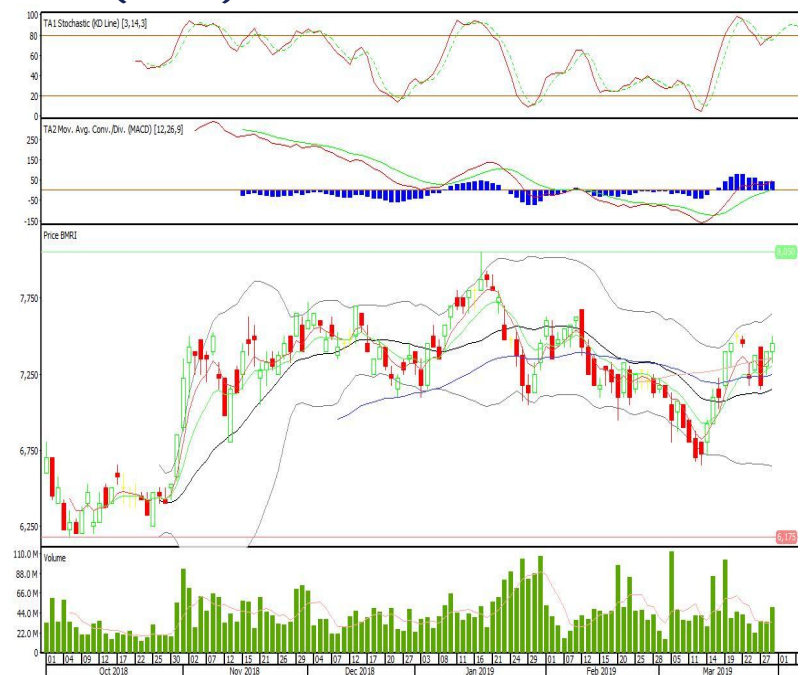


Bank Mandiri

Rekomendasi: Buy

---Candle ditutup di atas EMA5,10 dan membentuk pola long white marubozu yang merupakan sinyal bullish continuation, stochastic netral dan MACD histogram divergence positif. Target kenaikan harga pada level 7.525 kemudian 7.600 dengan *support* di level 7.375, *cut loss* jika *break* 7.300.

BMRI (7.450)



**United Tractors**

**Rekomendasi: Buy on Weakness**

---Candle ditutup dengan membentuk pola doji yang merupakan sinyal indecision, stochastic netral dan MACD histogram bearish cross over. Target harga beli pada level 26.700 dengan resist di level 27.425 kemudian 27.900.

**UNTR (27.050)**



**Bumi Serpong Damai**

**Rekomendasi: Buy on Weakness**

---Candle ditutup diatas MA20 dengan membentuk pola small bearish candle, stochastic netral, MACD histogram convergence positif. Target harga beli pada level 1.395 dengan resist di level 1.415 kemudian 1.425.

**BSDE (1.405)**

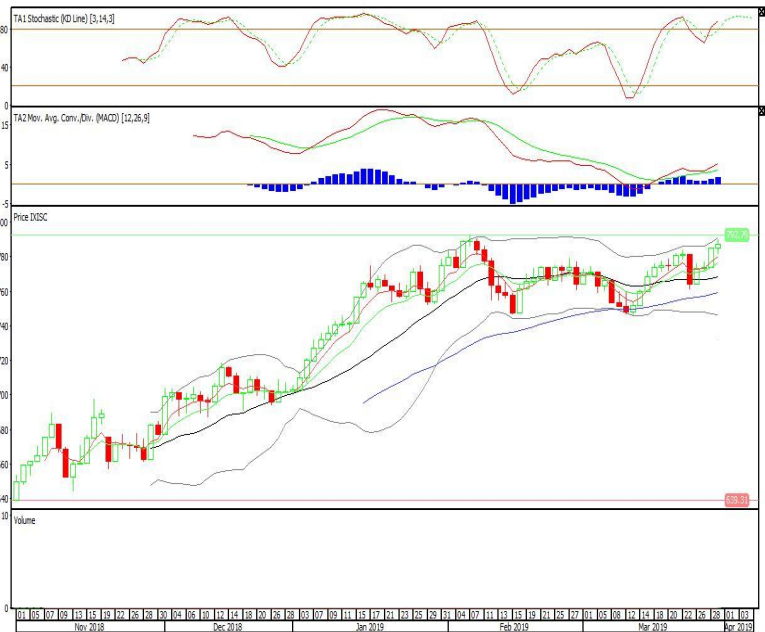


**Premier ETF Indonesia Stated-Owned Companies**

**Rekomendasi: Buy**

---Candle ditutup di atas EMA5,10 dengan membentuk pola spinning top yang merupakan sinyal indecision, stochastic overbought, MACD histogram divergence positif. Target kenaikan harga pada level 789 kemudian 792 dengan support di level 782, cut loss jika break 779.

**XISC (787)**

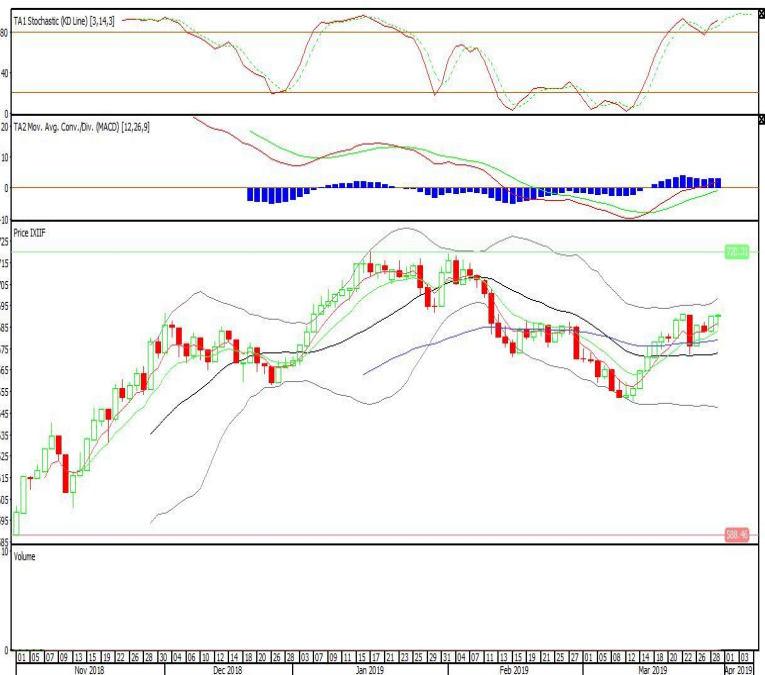


**Premier ETF Indonesia Financial**

**Rekomendasi: Buy**

---Candle ditutup di atas EMA5,10 dengan membentuk pola small bullish candle, stochastic overbought, MACD histogram divergence positif. Target kenaikan harga pada level 694 kemudian 698 dengan support di level 686, cut loss jika break 682.

**XIIF (690)**

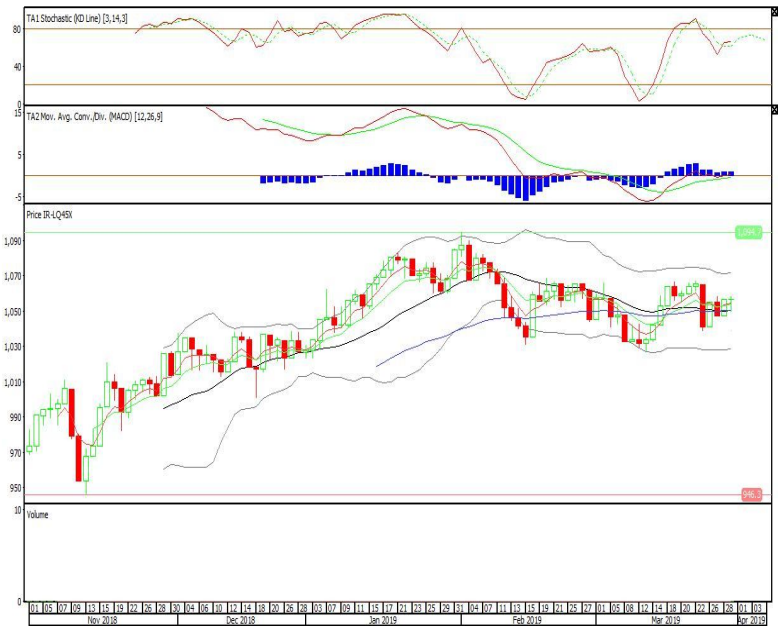


Premier ETF LQ-45

**Rekomendasi: Buy**

---Candle ditutup diatas EMA5,10 dengan membentuk pola doji yang merupakan sinyal indecision, stochastic netral, MACD histogram divergence positif. Target kenaikan harga pada level 1.060 kemudian 1.065 dengan *support* di level 1.052, *cut loss* jika *break* 1.047.

**R-LQ45X (1.056)**



**Head Office****PT INDO PREMIER SEKURITAS**

Wisma GKBI 7/F Suite 718

Jl. Jend. Sudirman No.28

Jakarta 10210 - Indonesia

p +62.21.5793.1168

f +62.21.5793.1167

**ANALYSTS CERTIFICATION.**

The views expressed in this research report accurately reflect the analyst's personal views about any and all of the subject securities or issuers; and no part of the research analyst's compensation was, is, or will be, directly or indirectly, related to the specific recommendations or views expressed in the report.

**DISCLAIMERS**

This research is based on information obtained from sources believed to be reliable, but we do not make any representation or warranty nor accept any responsibility or liability as to its accuracy, completeness or correctness. Opinions expressed are subject to change without notice. This document is prepared for general circulation. Any recommendations contained in this document does not have regard to the specific investment objectives, financial situation and the particular needs of any specific addressee. This document is not and should not be construed as an offer or a solicitation of an offer to purchase or subscribe or sell any securities. PT. Indo Premier Sekuritas or its affiliates may seek or will seek investment banking or other business relationships with the companies in this report.