

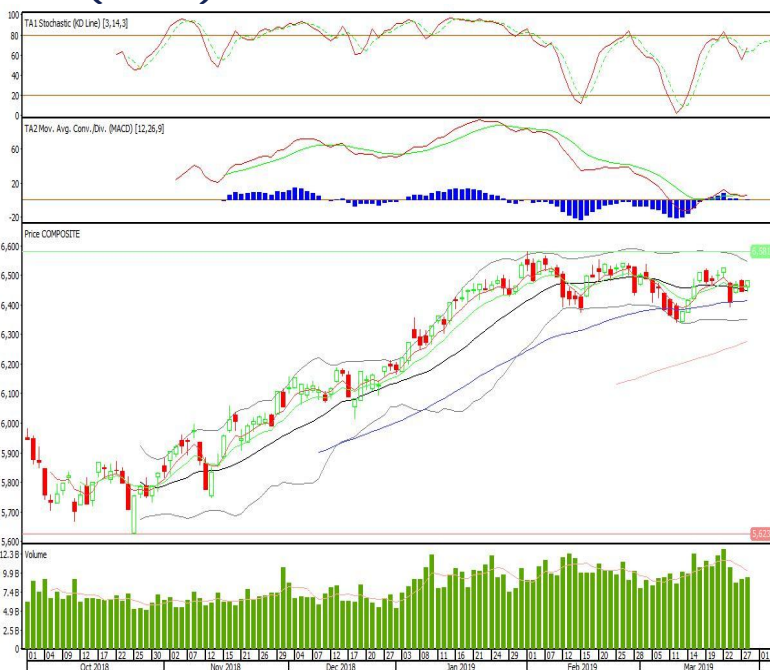
Technical Corner

IHSG

Range: 6.445–6.515

---Indeks ditutup di atas MA20 dan membentuk pola small bullish candle, stochastic golden cross dan MACD divergence positif. Target kenaikan indeks pada level 6.515 kemudian 6.545 dengan *support* di level 6.445 dan 6.410.

IHSG (6.480)



Kalbe Farma

Rekomendasi: Buy

---Candle ditutup di atas EMA5,10 dan membentuk pola white closing marubozu yang merupakan sinyal bullish continuation, stochastic netral dan MACD histogram divergence positif. Target kenaikan harga pada level 1.545 kemudian 1.560 dengan *support* di level 1.515. *cut loss* jika *break* 1.500.

KLBF (1.530)



Ramayana Lestari Sentosa

Rekomendasi: Buy

---Candle ditutup di atas EMA5,10 dan membentuk pola doji yang merupakan sinyal indecision, stochastic netral dan MACD histogram convergence negatif. Target kenaikan harga pada level 1.805 kemudian 1.830 dengan support di level 1.755, cut loss jika break 1.725.

RALS (1.780)



Elnusa

Rekomendasi: Buy

---Candle ditutup diatas EMA5,10 dengan membentuk pola white marubozu yang merupakan sinyal bullish continuation, stochastic golden cross, MACD histogram convergence negatif. Target kenaikan harga pada level 380 kemudian 394 dengan support di level 352, cut loss jika break 338.

ELSA (366)

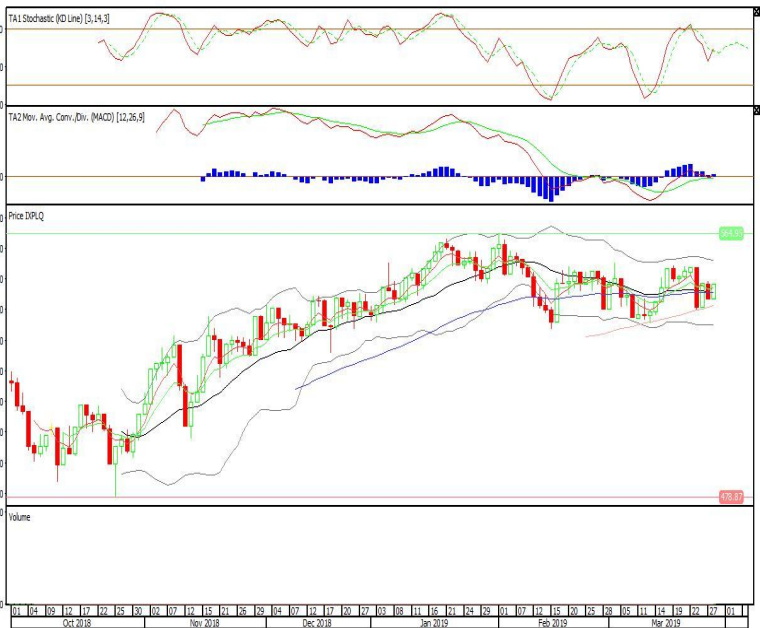


Pinnacle Enhanced Liquid ETF

Rekomendasi: Buy

---Candle ditutup di atas EMA5,10 dengan membentuk pola white marubozu yang merupakan sinyal bullish continuation, stochastic netral, MACD histogram divergence positif. Target kenaikan harga pada level 552 kemudian 557 dengan support di level 543, cut loss jika break 538.

XPLQ (548)

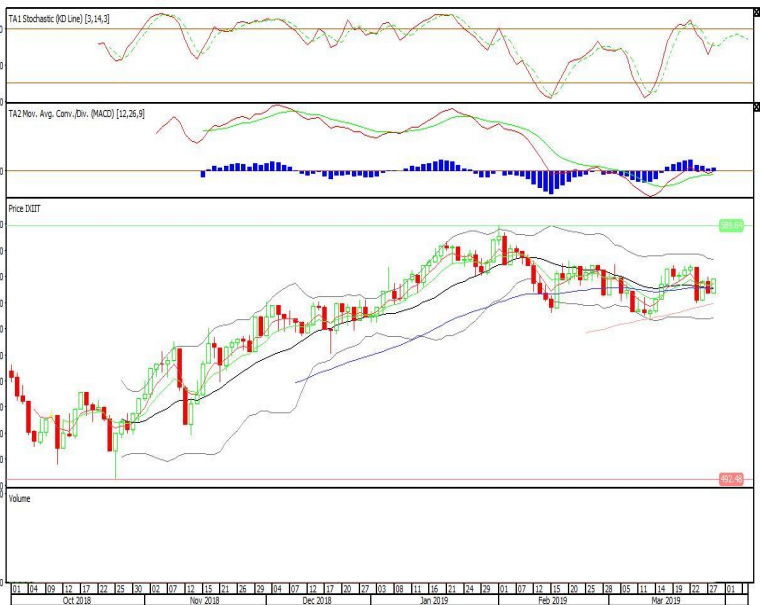


Premier ETF IDX30

Rekomendasi: Buy

---Candle ditutup di atas EMA5,10 dengan membentuk pola white marubozu yang merupakan sinyal bullish continuation, stochastic netral, MACD histogram divergence positif. Target kenaikan harga pada level 574 kemudian 580 dengan support di level 563, cut loss jika break 558.

XIIT (569)

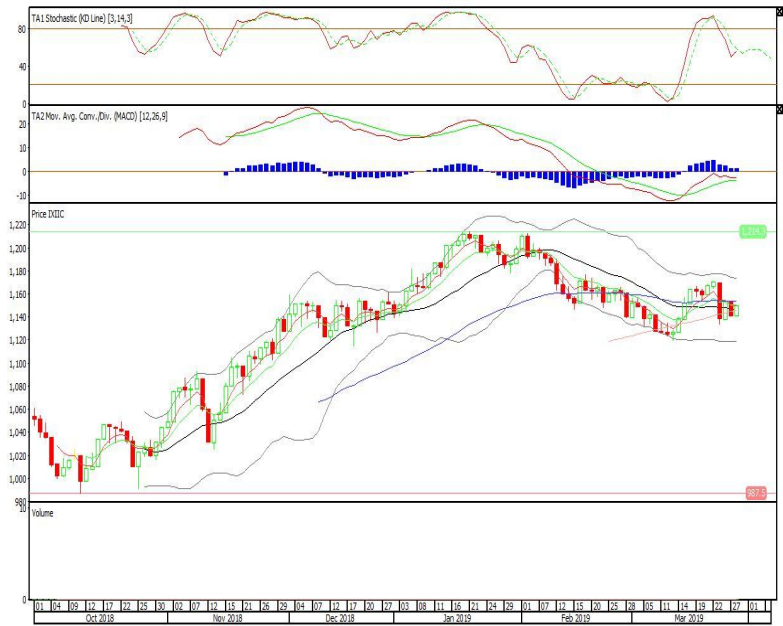


Premier ETF Indonesia Consumer

Rekomendasi: Buy

---Candle ditutup tepat pada EMA5,10 dengan membentuk pola white marubozu yang merupakan sinyal bullish continuation, stochastic netral, MACD histogram divergence positif. Target kenaikan harga pada level 1.159 kemudian 1.168 dengan *support* di level 1.140, *cut loss* jika *break* 1.131.

XIIC (1.149)



Head Office**PT INDO PREMIER SEKURITAS**

Wisma GKBI 7/F Suite 718

Jl. Jend. Sudirman No.28

Jakarta 10210 - Indonesia

p +62.21.5793.1168

f +62.21.5793.1167

ANALYSTS CERTIFICATION.

The views expressed in this research report accurately reflect the analyst's personal views about any and all of the subject securities or issuers; and no part of the research analyst's compensation was, is, or will be, directly or indirectly, related to the specific recommendations or views expressed in the report.

DISCLAIMERS

This research is based on information obtained from sources believed to be reliable, but we do not make any representation or warranty nor accept any responsibility or liability as to its accuracy, completeness or correctness. Opinions expressed are subject to change without notice. This document is prepared for general circulation. Any recommendations contained in this document does not have regard to the specific investment objectives, financial situation and the particular needs of any specific addressee. This document is not and should not be construed as an offer or a solicitation of an offer to purchase or subscribe or sell any securities. PT. Indo Premier Sekuritas or its affiliates may seek or will seek investment banking or other business relationships with the companies in this report.