

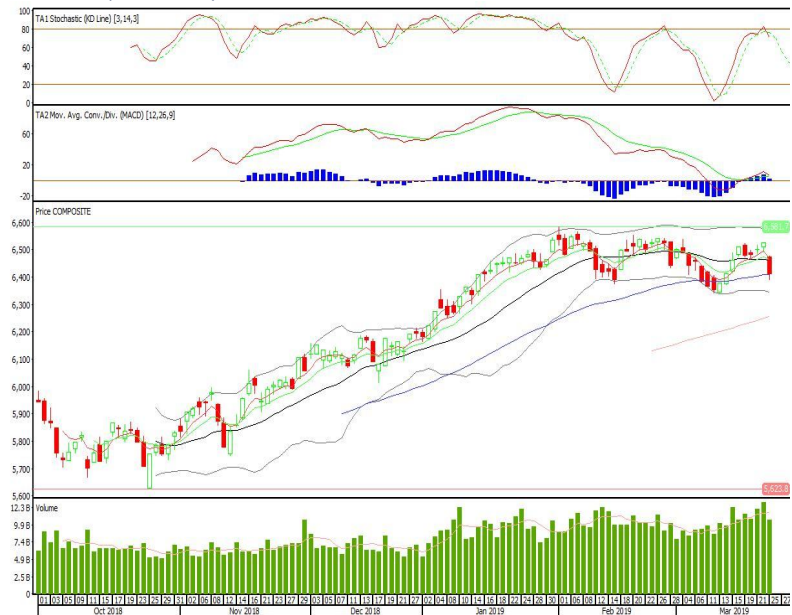
Technical Corner

IHSG

Range: 6.350–6.470

---Indeks ditutup di bawah MA20 dan membentuk pola long black marubozu yang merupakan sinyal bearish continuation, stochastic dead cross dan MACD bearish cross over. Target pelemahan indeks pada level 6.350 kemudian 6.300 dengan *resist* di level 6.470 dan 6.525.

IHSG (6.411)



Bukit Asam

Rekomendasi: Buy

---Candle ditutup di atas EMA59 dan membentuk pola white opening marubozu yang merupakan sinyal bullish continuation, stochastic netral dan MACD histogram divergence positif. Target kenaikan harga pada level 4.240 kemudian 4.310 dengan *support* di level 4.070, *cut loss* jika *break* 3.980.

PTBA (4.150)

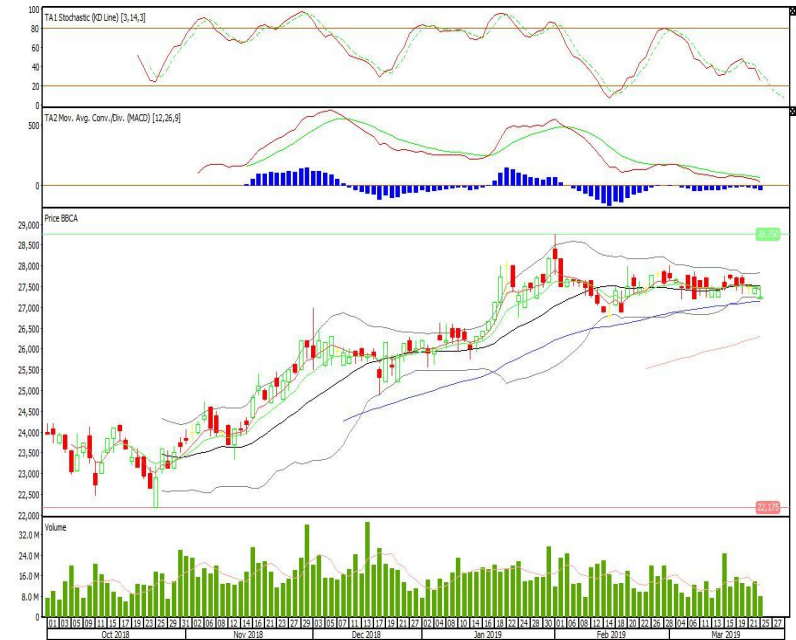


Bank Central Asia

Rekomendasi: Buy

---Candle masih bertahan di atas EMA50 dan membentuk pola inverted hammer yang merupakan sinyal bullish reversal, stochastic netral sedangkan MACD histogram divergence negatif. Target kenaikan harga pada level 27.450 kemudian 27.800 dengan *support* di level 26.950, *cut loss* jika *break* 26.675.

BBCA (27.250)



Wijaya Karya Beton

Rekomendasi: Buy on Weakness

---Candle bertahan di atas MA20 dan membentuk pola spinning top yang merupakan sinyal indecision, stochastic netral sedangkan MACD histogram divergence negatif. Target harga beli pada level 550 dengan *resist* di level 570 kemudian 585.

WTON (560)

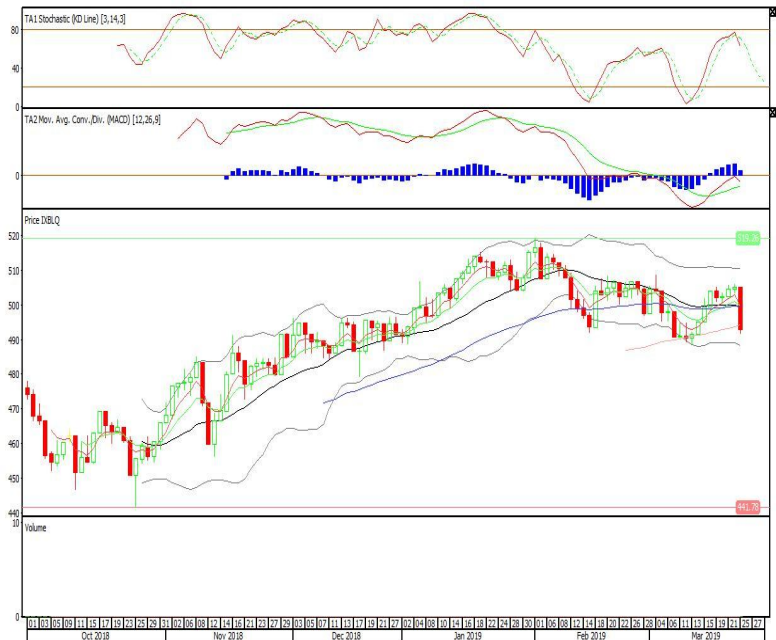


Batavia Smart Liquid ETF

Rekomendasi: SELL

---Candle ditutup dibawah EMA50 dengan membentuk pola black opening marubozu yang merupakan sinyal bearish continuation, stochastic netral, MACD histogram convergence positif. Target pelemahan harga pada level 480 kemudian 468 dengan *resist* di level 504 dan 517.

XBLQ (492)

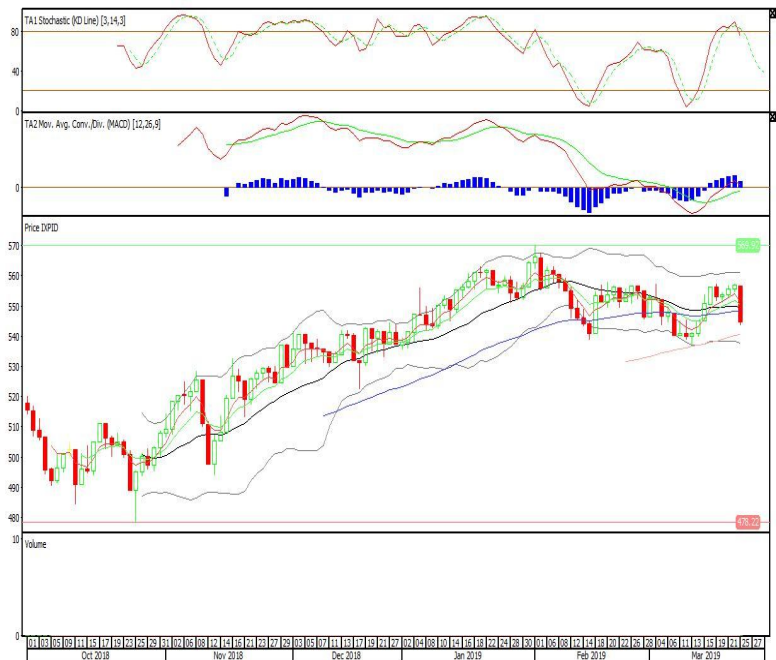


Pinnacle IDX30 ETF

Rekomendasi: SELL

---Candle ditutup dibawah EMA50 dan membentuk pola black opening marubozu yang merupakan sinyal bearish continuation, stochastic netral dan MACD histogram convergence positif. Target pelemahan harga pada level 533 kemudian 521 dengan *resist* di level 556 dan 568.

XPID (544)

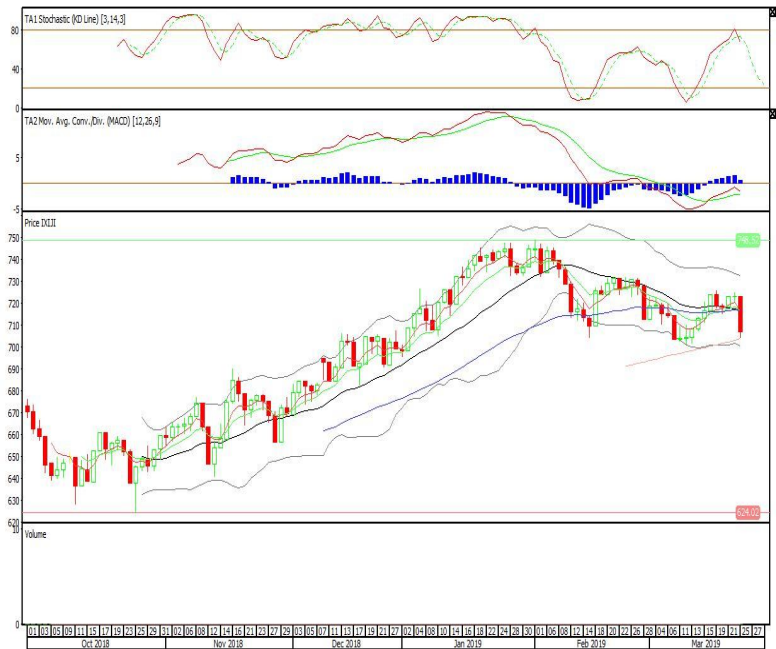


Premier ETF JII

Rekomendasi: SELL

---Candle ditutup dibawah EMA50 dan membentuk pola black opening marubozu yang merupakan sinyal bearish continuation, stochastic dead cross dan MACD histogram convergence positif. Target pelemahan harga pada level 690 kemudian 674 dengan *resist* di level 723 dan 739.

XIJI (706)



Head Office**PT INDO PREMIER SEKURITAS**

Wisma GKBI 7/F Suite 718

Jl. Jend. Sudirman No.28

Jakarta 10210 - Indonesia

p +62.21.5793.1168

f +62.21.5793.1167

ANALYSTS CERTIFICATION.

The views expressed in this research report accurately reflect the analyst's personal views about any and all of the subject securities or issuers; and no part of the research analyst's compensation was, is, or will be, directly or indirectly, related to the specific recommendations or views expressed in the report.

DISCLAIMERS

This research is based on information obtained from sources believed to be reliable, but we do not make any representation or warranty nor accept any responsibility or liability as to its accuracy, completeness or correctness. Opinions expressed are subject to change without notice. This document is prepared for general circulation. Any recommendations contained in this document does not have regard to the specific investment objectives, financial situation and the particular needs of any specific addressee. This document is not and should not be construed as an offer or a solicitation of an offer to purchase or subscribe or sell any securities. PT. Indo Premier Sekuritas or its affiliates may seek or will seek investment banking or other business relationships with the companies in this report.