

# Technical Corner

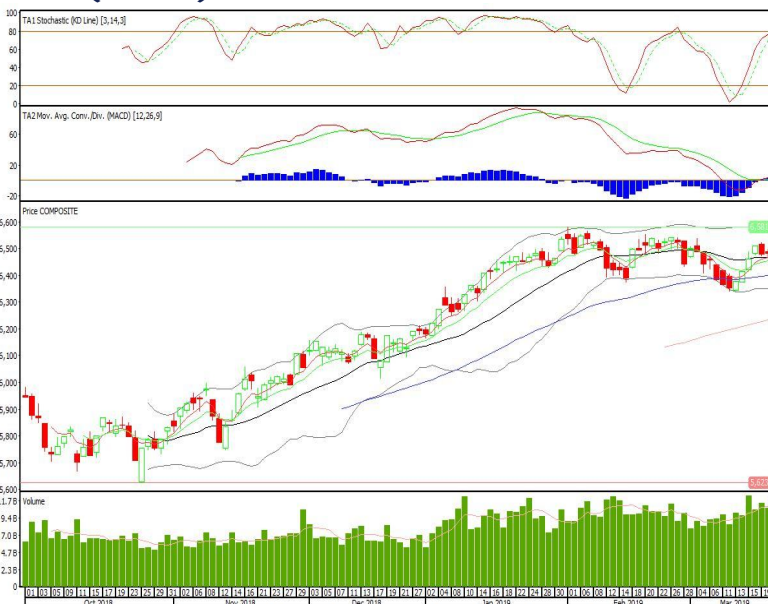
Technical | Indonesia | Daily Research

## IHSG

**Range: 6.465–6.535**

---Indeks bertahan di atas EMA5,10 dan kembali membentuk pola doji yang merupakan sinyal indecision, stochastic netral dan MACD histogram divergence positif. Target kenaikan indeks pada level 6.535 kemudian 6.570 dengan *support* di level 6.465 dan 6.430.

## IHSG (6.501)



## Charoen Phokphand Indonesia

**Rekomendasi: Buy**

---Candle ditutup di tutup di atas EMA5,10 dan membentuk pola morning star yang merupakan sinyal bullish reversal, stochastic netral dan MACD histogram divergence positif. Target kenaikan harga pada level 8.150 kemudian 8.400 dengan *support* di level 7.550, *cut loss* jika *break* 7.300.

## CPIN (7.850)



**Indo Tambangraya Megah**

**Rekomendasi: Buy**

---Candle ditutup di atas EMA5,10 dan membentuk pola white opening marubozu yang merupakan sinyal bullish continuation, stochastic overbought dan MACD histogram divergence positif. Target kenaikan harga pada level 23.825 kemudian 24.250 dengan *support* di level 22.875, *cut loss* jika *break* 22.400.

**ITMG (23.375)**



**Alam Sutera Realty**

**Rekomendasi: Buy**

---Candle ditutup di atas MA20 dan membentuk pola white opening marubozu yang merupakan sinyal bullish continuation, stochastic netral dan MACD histogram divergence positif. Target kenaikan harga pada level 336 kemudian 340 dengan *support* di level 318, *cut loss* jika *break* 310.

**ASRI (326)**

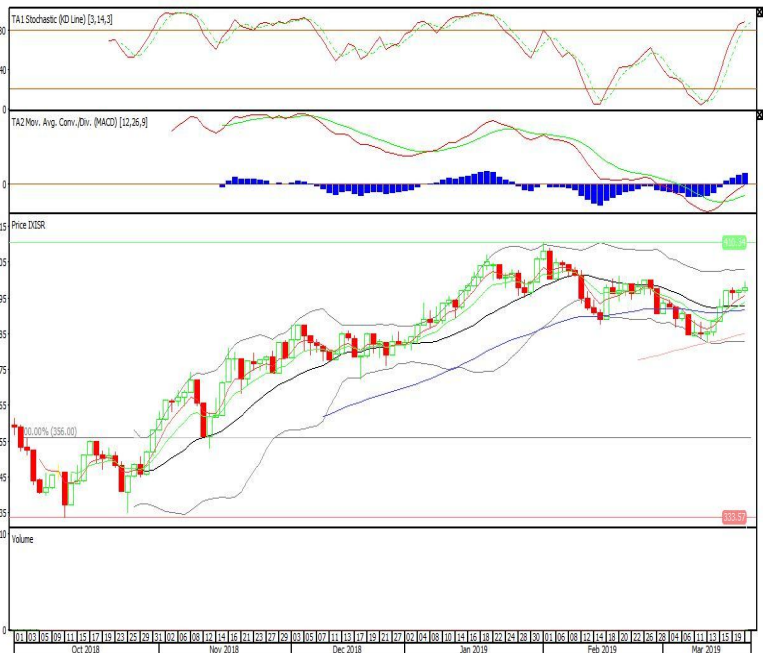


Premier ETF SRI-KEHATI

**Rekomendasi: Buy**

---Candle ditutup di atas EMA5,10 dengan membentuk pola small bullish candle, stochastic overbought, MACD histogram divergence positif. Target kenaikan harga pada level 400 kemudian 402 dengan support di level 395, cut loss jika break 393.

**XISR (397)**

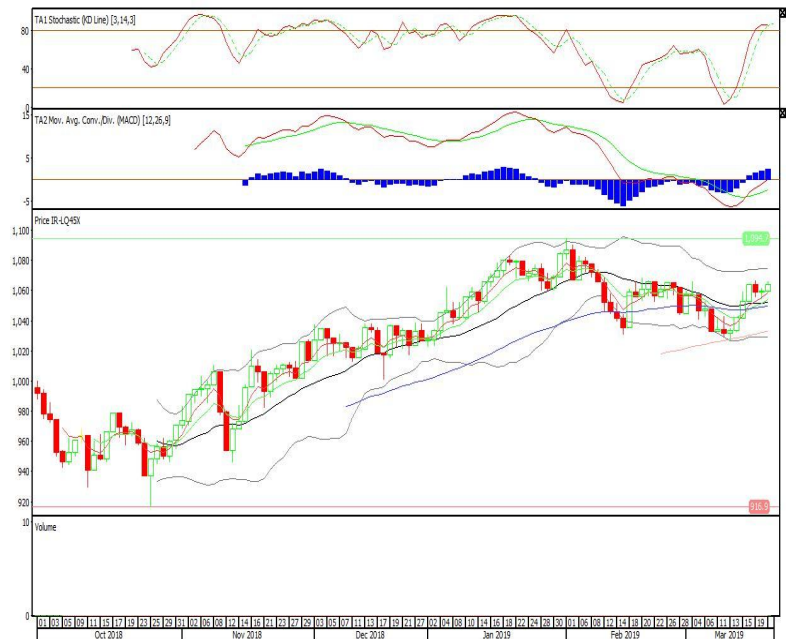


Premier ETF LQ-45

**Rekomendasi: Buy**

---Candle ditutup di atas EMA5,10 dan membentuk pola small bullish candle, stochastic overbought dan MACD histogram divergence positif. Target kenaikan harga pada level 1.068 kemudian 1.072 dengan support di level 1.059, cut loss jika break 1.055.

**R-LQ45X (1.063)**

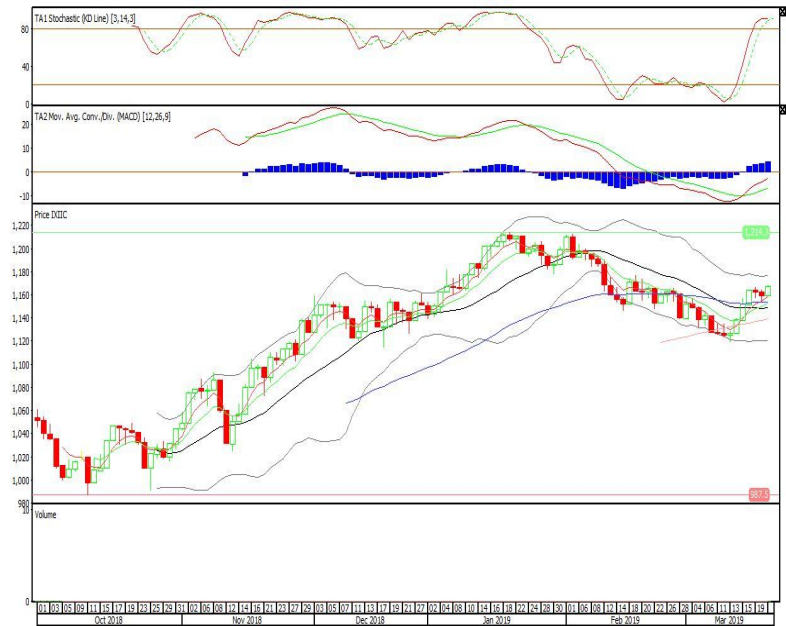


Premier ETF Indonesia Consumer

**Rekomendasi: Buy**

---Candle ditutup di atas EMA5,10 dan membentuk pola small bullish candle, stochastic overbought dan MACD histogram divergence positif. Target kenaikan harga pada level 1.174 kemudian 1.182 dengan support di level 1.158, cut loss jika break 1.150.

**XIIC (1.166)**



**Head Office****PT INDO PREMIER SEKURITAS**

Wisma GKBI 7/F Suite 718

Jl. Jend. Sudirman No.28

Jakarta 10210 - Indonesia

p +62.21.5793.1168

f +62.21.5793.1167

**ANALYSTS CERTIFICATION.**

The views expressed in this research report accurately reflect the analyst's personal views about any and all of the subject securities or issuers; and no part of the research analyst's compensation was, is, or will be, directly or indirectly, related to the specific recommendations or views expressed in the report.

**DISCLAIMERS**

This research is based on information obtained from sources believed to be reliable, but we do not make any representation or warranty nor accept any responsibility or liability as to its accuracy, completeness or correctness. Opinions expressed are subject to change without notice. This document is prepared for general circulation. Any recommendations contained in this document does not have regard to the specific investment objectives, financial situation and the particular needs of any specific addressee. This document is not and should not be construed as an offer or a solicitation of an offer to purchase or subscribe or sell any securities. PT. Indo Premier Sekuritas or its affiliates may seek or will seek investment banking or other business relationships with the companies in this report.