

# Technical Corner

21 Maret 2019

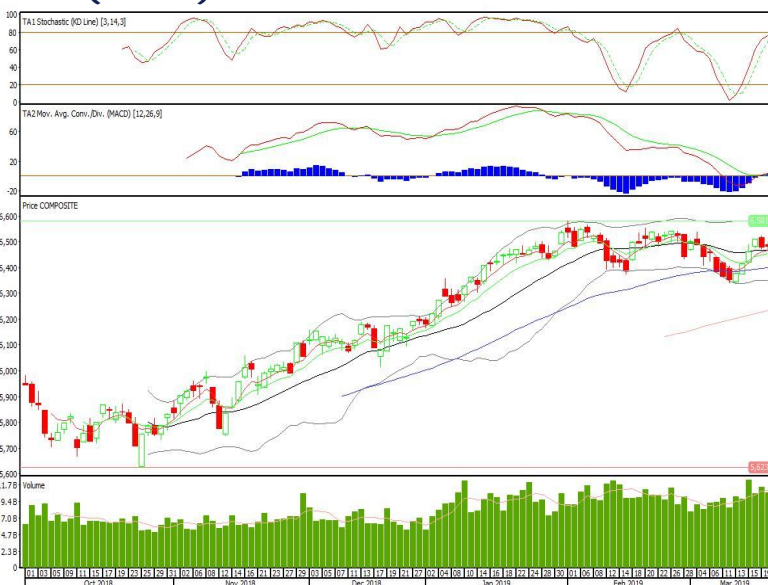
Technical | Indonesia | Daily Research

## IHSG

**Range: 6.440–6.525**

---Indeks bertahan di atas MA20 dan membentuk pola doji yang merupakan sinyal indecision, stochastic netral dan MACD histogram divergence positif. Target kenaikan indeks pada level 6.525 kemudian 6.565 dengan *support* di level 6.440 dan 6.400.

## IHSG (6.482)



## Timah

**Rekomendasi: Buy**

---Candle ditutup di atas EMA5,10 dan membentuk pola white opening marubozu yang merupakan sinyal bullish continuation, stochastic oversold dan MACD histogram convergence negatif. Target kenaikan harga pada level 1.370 kemudian 1.410 dengan *support* di level 1.270, *cut loss* jika *break* 1.220.

## TINS (1.320)



Mitra Adiperkasa

**Rekomendasi: Buy on Weakness**

---Candle ditutup di bawah EMA5 dan membentuk pola spinning top yang merupakan sinyal indecision, stochastic netral dan MACD histogram divergence negatif. Target harga beli pada level 1.060 dengan resist di level 1.095 dan 1.110.

**MAPI (1.075)**



Japfa Comfeed Indonesia

**Rekomendasi: Buy**

---Candle ditutup dengan membentuk pola inverted hammer yang merupakan sinyal bullish reversal, stochastic netral dan MACD histogram convergence positif. Target kenaikan harga pada level 2.250 kemudian 2.320 dengan support di level 2.125, cut loss jika break 2.060.

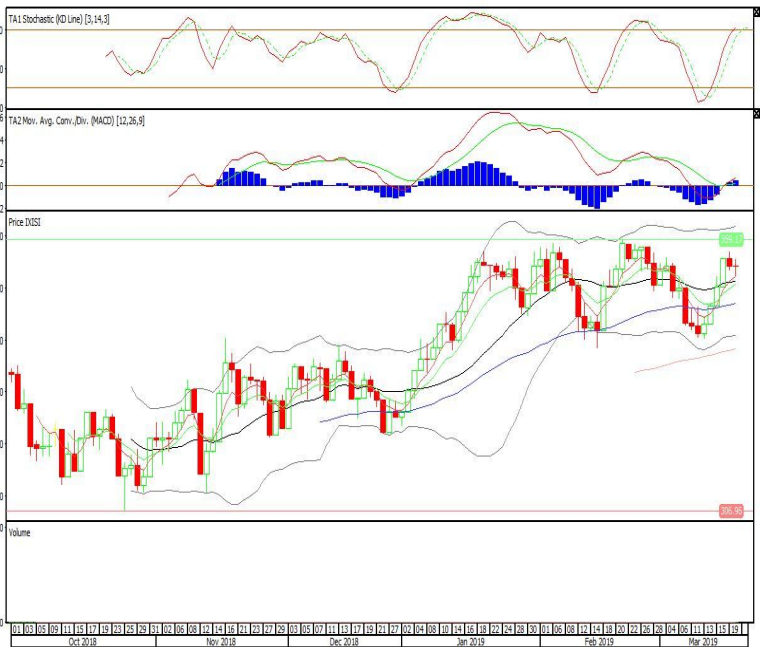
**JPFA (2.200)**



**Premier ETF SMinfra18**

**Rekomendasi: Buy on Weakness**  
 ---Candle ditutup di atas EMA5,10 dengan membentuk pola doji yang merupakan sinyal indecision, stochastic overbought, MACD histogram divergence positif. Target harga beli pada level 352 dengan resist di level 356 kemudian 358.

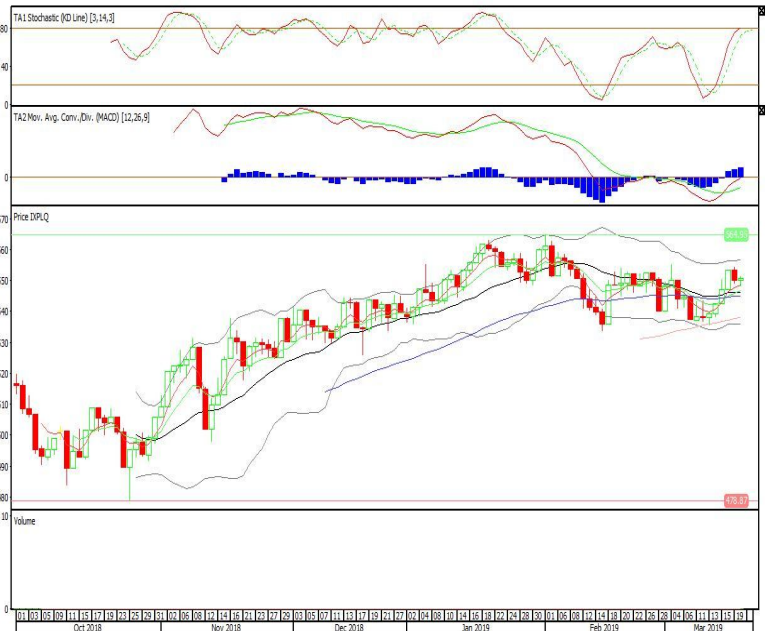
**XISI (354)**



**Pinnacle Enhanced Liquid ETF**

**Rekomendasi: Buy**  
 ---Candle ditutup di atas EMA5,10 dan membentuk pola small bullish candle, stochastic netral dan MACD histogram divergence positif. Target kenaikan harga pada level 553 kemudian 556 dengan support di level 547, cut loss jika break 544.

**XPLQ (550)**

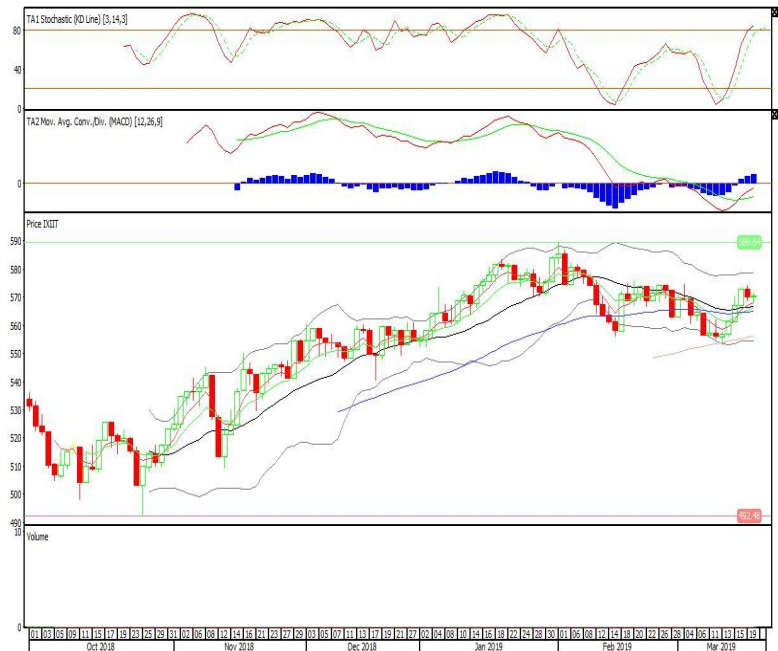


Premier ETF IDX30

**Rekomendasi: Buy**

---Candle ditutup di atas EMA5,10 dan membentuk pola doji yang merupakan sinyal indecision, stochastic overbought dan MACD histogram divergence positif. Target kenaikan harga pada level 573 kemudian 576 dengan *support* di level 567, *cut loss* jika *break* 564.

**XIIT (570)**



**Head Office****PT INDO PREMIER SEKURITAS**

Wisma GKBI 7/F Suite 718

Jl. Jend. Sudirman No.28

Jakarta 10210 - Indonesia

p +62.21.5793.1168

f +62.21.5793.1167

**ANALYSTS CERTIFICATION.**

The views expressed in this research report accurately reflect the analyst's personal views about any and all of the subject securities or issuers; and no part of the research analyst's compensation was, is, or will be, directly or indirectly, related to the specific recommendations or views expressed in the report.

**DISCLAIMERS**

This research is based on information obtained from sources believed to be reliable, but we do not make any representation or warranty nor accept any responsibility or liability as to its accuracy, completeness or correctness. Opinions expressed are subject to change without notice. This document is prepared for general circulation. Any recommendations contained in this document does not have regard to the specific investment objectives, financial situation and the particular needs of any specific addressee. This document is not and should not be construed as an offer or a solicitation of an offer to purchase or subscribe or sell any securities. PT. Indo Premier Sekuritas or its affiliates may seek or will seek investment banking or other business relationships with the companies in this report.