

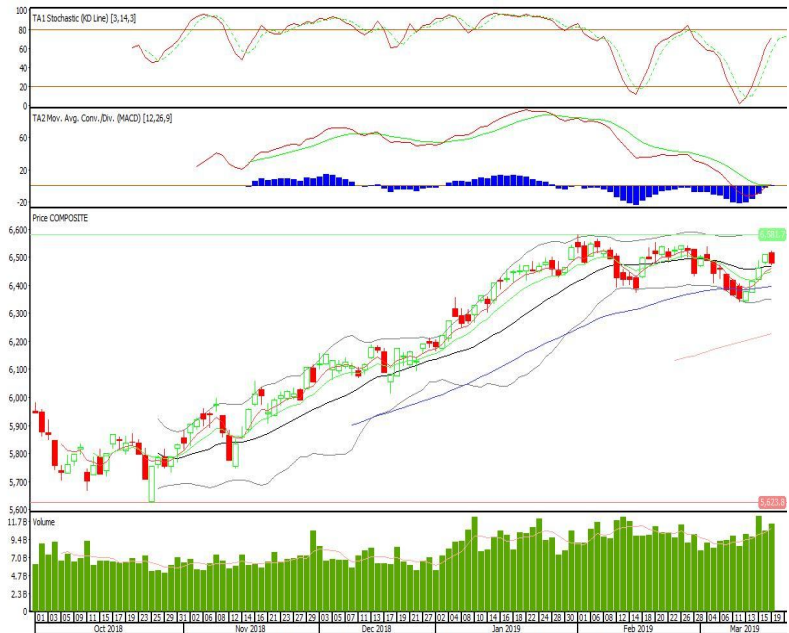
Technical Corner

IHSG

Range: 6.445–6.520

---Indeks meskipun membentuk pola long black marubozu yang merupakan sinyal bearish continuation namun masih mampu bertahan di atas EMA5,10, stochastic netral dan MACD bullish cross over. Target kenaikan indeks pada level 6.520 kemudian 6.565 dengan *support* di level 6.445 dan 6.410.

IHSG (6.480)



Surya Semesta Internusa

Rekomendasi: Buy

---Candle ditutup di atas EMA5,10 dan membentuk pola white opening marubozu yang merupakan sinyal bullish continuation, stochastic netral dan MACD histogram convergence negatif. Target kenaikan harga pada level 600 kemudian 615 dengan *support* di level 575, *cut loss* jika *break* 565.

SSIA (585)



United Tractors

Rekomendasi: Buy

---Candle ditutup di atas EMA50 dan membentuk pola long white marubozu yang merupakan sinyal bullish continuation, stochastic netral dan MACD histogram divergence positif. Target kenaikan harga pada level 27.975 kemudian 28.600 dengan support di level 26.925, cut loss jika break 26.450.

UNTR (27.500)

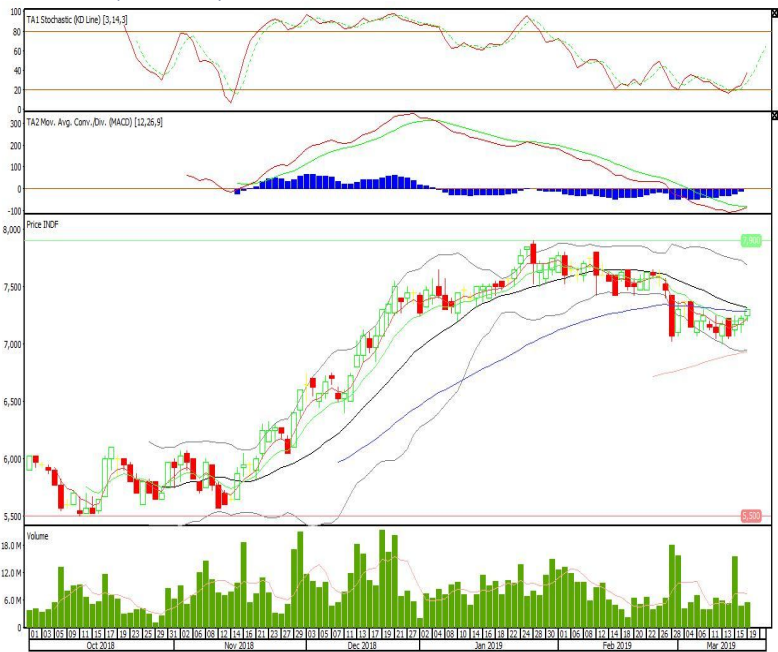


Indofood Sukses Makmur

Rekomendasi: Buy

---Candle ditutup di atas EMA5,10 dan membentuk pola three white soldier yang merupakan sinyal bullish reversal, stochastic netral dan MACD bullish cross over. Target kenaikan harga pada level 7.375 kemudian 7.450 dengan support di level 7.200, cut loss jika break 7.125.

INDF (7.300)



Premier ETF Indo Finacial

Rekomendasi: Buy

---Candle ditutup di atas EMA50 dan membentuk pola small bullish, stochastic netral dan MACD histogram divergence positif. Target kenaikan harga pada level 686 kemudian 692 dengan *support* di level 672, *cut loss* jika *break* 667.

XIIF (680)

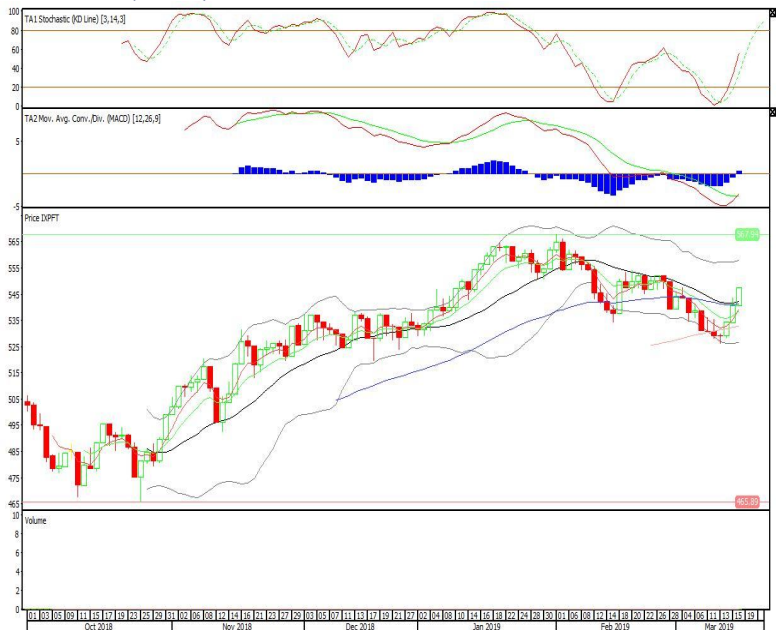


Pinnacle Indonesia ESG ETF

Rekomendasi: Buy

---Candle ditutup bertahan di atas MA20 dan membentuk pola doji yang merupakan sinyal indecision, stochastic netral dan MACD histogram divergence positif. Target kenaikan harga pada level 465 kemudian 469 dengan *support* di level 458, *cut loss* jika *break* 455.

XPSG (461)

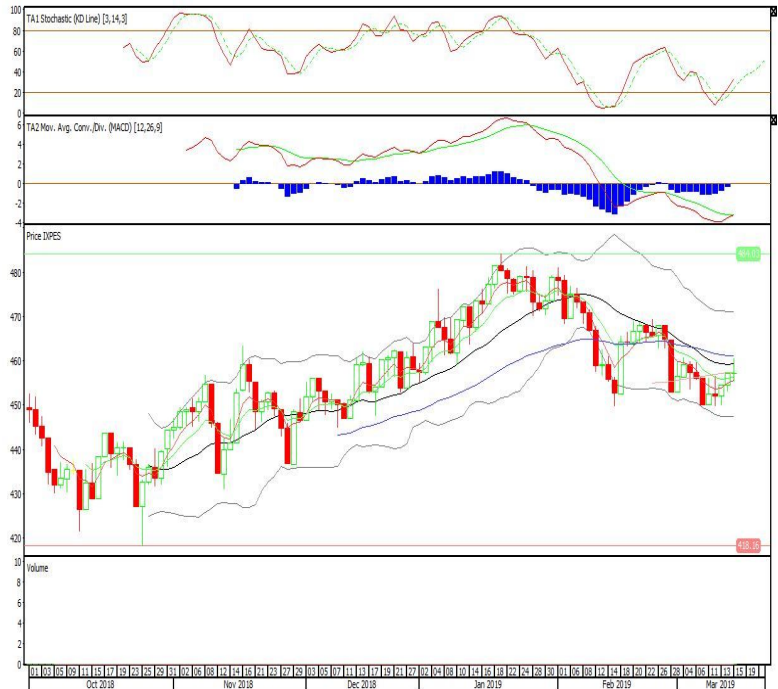


Premier ETF Indo SOC

Rekomendasi: Buy

---Candle ditutup bertahan di atas EMA5,10 dan membentuk pola doji yang merupakan sinyal indecision, stochastic netral dan MACD histogram divergence positif. Target kenaikan harga pada level 780 kemudian 787 dengan *support* di level 768, *cut loss* jika *break* 762.

XISC (774)



Head Office**PT INDO PREMIER SEKURITAS**

Wisma GKBI 7/F Suite 718

Jl. Jend. Sudirman No.28

Jakarta 10210 - Indonesia

p +62.21.5793.1168

f +62.21.5793.1167

ANALYSTS CERTIFICATION.

The views expressed in this research report accurately reflect the analyst's personal views about any and all of the subject securities or issuers; and no part of the research analyst's compensation was, is, or will be, directly or indirectly, related to the specific recommendations or views expressed in the report.

DISCLAIMERS

This research is based on information obtained from sources believed to be reliable, but we do not make any representation or warranty nor accept any responsibility or liability as to its accuracy, completeness or correctness. Opinions expressed are subject to change without notice. This document is prepared for general circulation. Any recommendations contained in this document does not have regard to the specific investment objectives, financial situation and the particular needs of any specific addressee. This document is not and should not be construed as an offer or a solicitation of an offer to purchase or subscribe or sell any securities. PT. Indo Premier Sekuritas or its affiliates may seek or will seek investment banking or other business relationships with the companies in this report.