

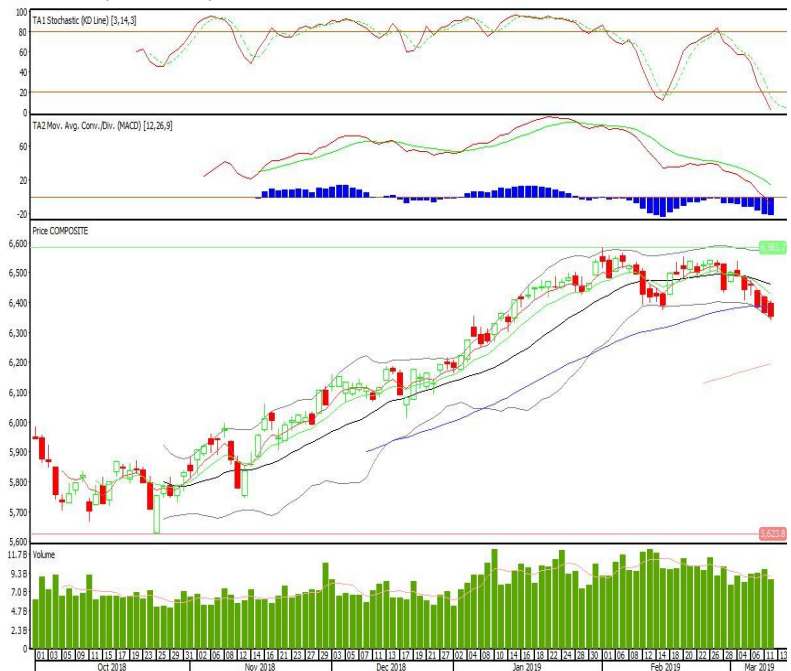
Technical Corner

IHSG

Range: 6.310–6.395

---Indeks ditutup di bawah EMA5,10 dan membentuk pola long black marubozu yang merupakan sinyal bearish continuation, stochastic oversold dan MACD histogram divergence negatif. Target pelemahan indeks pada level 6.310 kemudian 6.260 dengan *resist* di level 6.395 dan 6.440.

IHSG (6.353)



Unilever Indonesia

Rekomendasi: Buy

---Candle ditutup di atas EMA5,10 dan membentuk pola long white marubozu yang merupakan sinyal bullish continuation, stochastic golden cross dan MACD histogram convergence negatif. Target kenaikan harga pada level 49.575 kemudian 50.125 dengan *support* di level 48.400, *cut loss* jika *break* 47.850.

UNVR (49.000)



Vale Indonesia

Rekomendasi: Buy

---Candle ditutup dengan membentuk pola doji yang merupakan sinyal indecision, stochastic oversold sedangkan MACD histogram divergence negatif. Target kenaikan harga pada level 3.640 kemudian 3.700 dengan support di level 3.540, cut loss jika break 3.500.

INCO (3.590)



XL Axiata

Rekomendasi: Buy

---Candle ditutup diatas EMA5,10 dengan membentuk pola long white marubozu yang merupakan sinyal bullish continuation, stochastic netral, MACD histogram convergence negatif. Target kenaikan harga pada level 2.580 kemudian 2.660 dengan support di level 2.420, cut loss jika break 2.340.

EXCL (2.500)

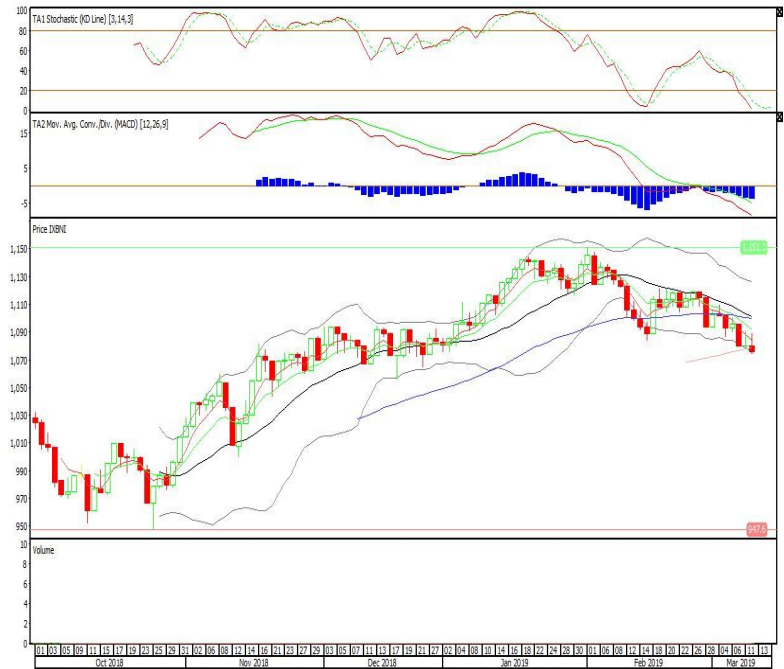


BNI-AM Nusantara ETF MSCI Indonesia

Rekomendasi: SELL

---Candle ditutup dibawah lower band dengan membentuk pola small bearish candle, stochastic oversold, MACD histogram divergence negatif. Target pelemahan harga pada level 1.072 kemudian 1.068 dengan *resist* di level 1.080 dan 1.084.

XBNI (1.076)

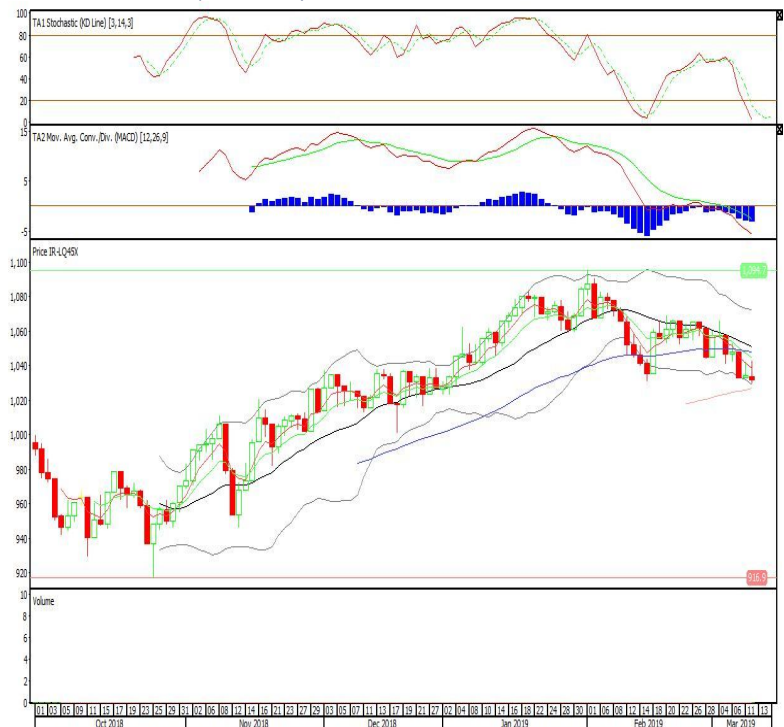


Premier ETF LQ-45

Rekomendasi: SELL

---Candle ditutup dibawah EMA5 dengan membentuk pola pola small bearish candle, stochastic oversold, MACD histogram divergence negatif. Target pelemahan harga pada level 1.026 kemudian 1.021 dengan *resist* di level 1.036 dan 1.041.

R-LQ45X (1.031)

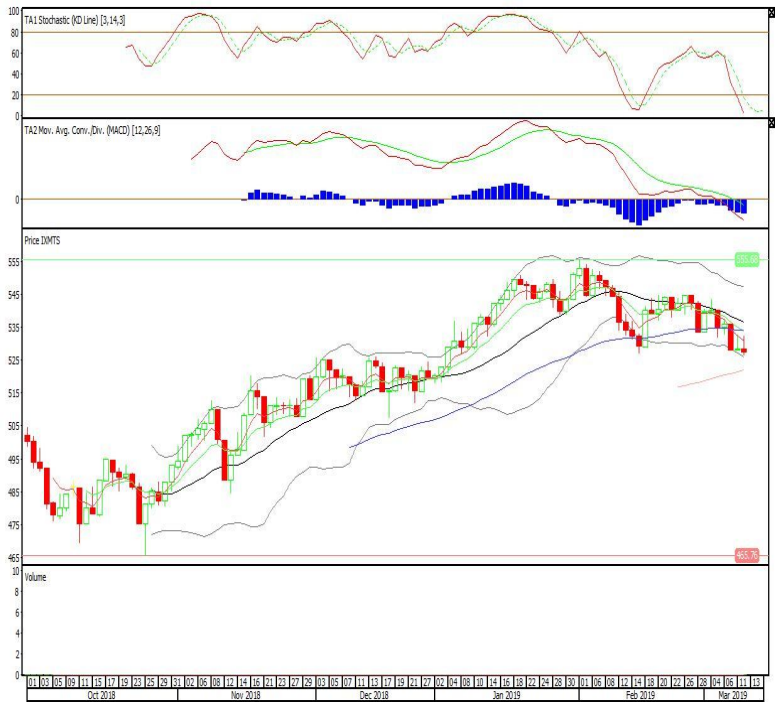


ETF MNC36 Likuid

Rekomendasi: SELL

---Candle ditutup dibawah EMA5 dengan membentuk pola small bearish candle, stochastic oversold, MACD histogram divergence negatif. Target pelemahan harga pada level 524 kemudian 521 dengan *resist* di level 530 dan 533.

XMTS (527)



Head Office**PT INDO PREMIER SEKURITAS**

Wisma GKBI 7/F Suite 718

Jl. Jend. Sudirman No.28

Jakarta 10210 - Indonesia

p +62.21.5793.1168

f +62.21.5793.1167

ANALYSTS CERTIFICATION.

The views expressed in this research report accurately reflect the analyst's personal views about any and all of the subject securities or issuers; and no part of the research analyst's compensation was, is, or will be, directly or indirectly, related to the specific recommendations or views expressed in the report.

DISCLAIMERS

This research is based on information obtained from sources believed to be reliable, but we do not make any representation or warranty nor accept any responsibility or liability as to its accuracy, completeness or correctness. Opinions expressed are subject to change without notice. This document is prepared for general circulation. Any recommendations contained in this document does not have regard to the specific investment objectives, financial situation and the particular needs of any specific addressee. This document is not and should not be construed as an offer or a solicitation of an offer to purchase or subscribe or sell any securities. PT. Indo Premier Sekuritas or its affiliates may seek or will seek investment banking or other business relationships with the companies in this report.