

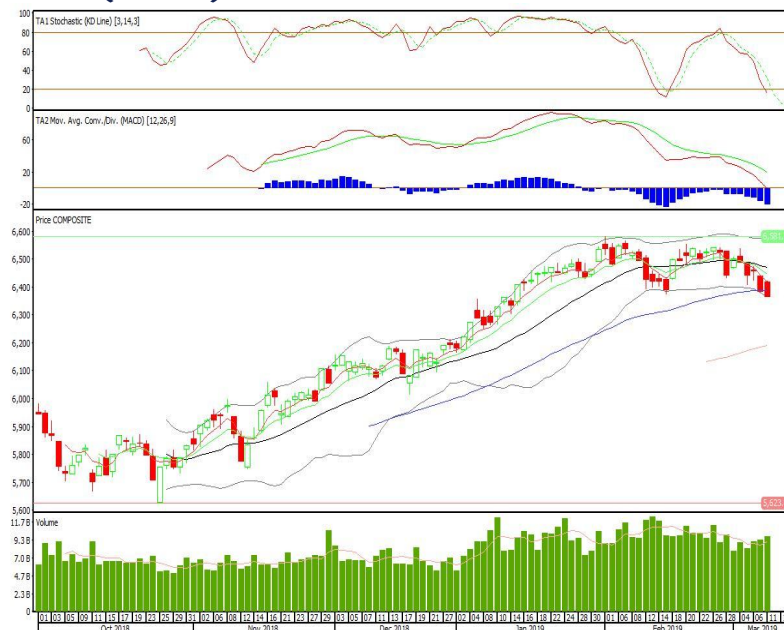
Technical Corner

IHSG

Range: 6.325–6.400

---Indeks ditutup dengan membentuk pola black closing marubozu yang merupakan sinyal bearish continuation, namun stochastic dan bollinger band mengindikasikan sudah pada area oversold. Sementara itu MACD histogram divergence negatif. Target kenaikan indeks pada level 6.400 kemudian 6.430 dengan *support* di level 6.325 dan 6.290.

IHSG (6.366)



Waskita Beton Precast

Rekomendasi: Buy

---Candle ditutup di atas MA20 dan membentuk pola long white marubozu yang merupakan sinyal bullish continuation, stochastic golden cross dan MACD bullish cross over. Target kenaikan harga pada level 392 kemudian 398 dengan *support* di level 378, *cut loss* jika *break* 374.

WSBP (386)



Telekomunikasi Indonesia

Rekomendasi: Buy

---Candle ditutup dengan membentuk pola harami yang merupakan sinyal bullish reversal, stochastic oversold sedangkan MACD histogram divergence negatif. Target kenaikan harga pada level 3.810 kemudian 3.850 dengan support di level 3.740, cut loss jika break 3.700.

TLKM (3.770)



Erajaya Swasembada

Rekomendasi: Buy

---Candle ditutup dibawah EMA5 dengan membentuk pola doji yang merupakan sinyal indecision, stochastic oversold, MACD histogram divergence negatif. Target kenaikan harga pada level 2.020 kemudian 2.060 dengan support di level 1.950, cut loss jika break 1.910.

ERAA (1.985)

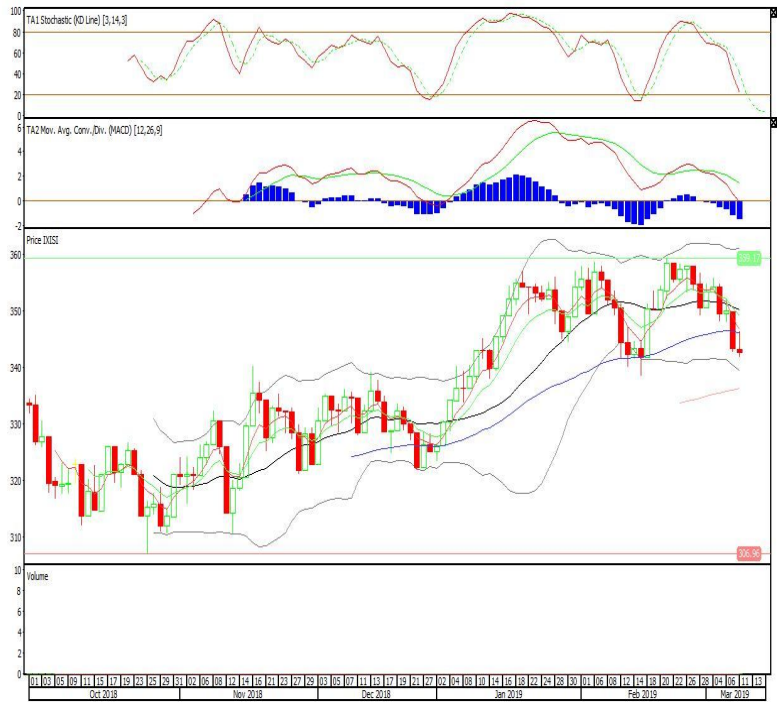


Premier ETF SMinfra18

Rekomendasi: Buy

---Candle ditutup diatas lower band dengan membentuk pola spinning top yang merupakan sinyal indecision, stochastic netral, MACD histogram divergence negatif. Target kenaikan harga pada level 344 kemudian 346 dengan *support* di level 340, *cut loss* jika *break* 338.

XISI (342)

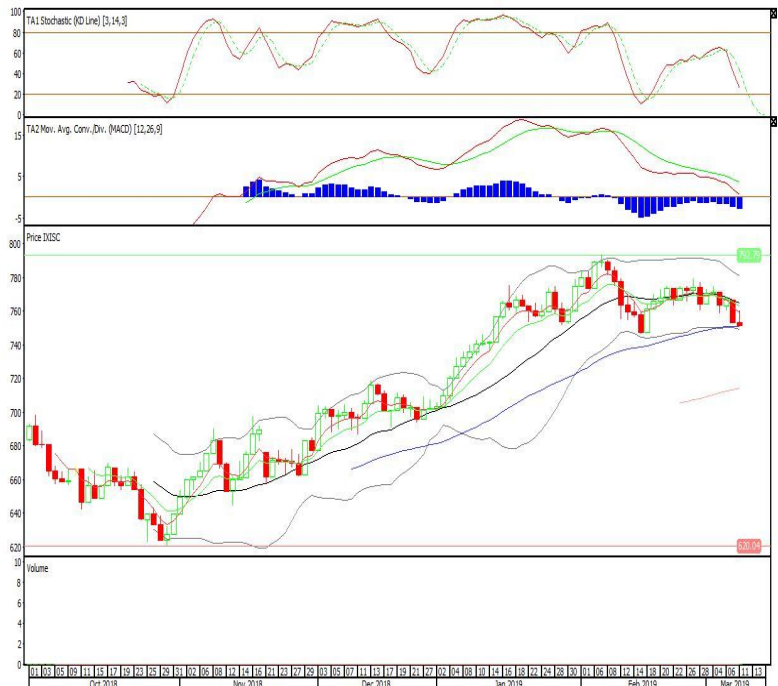


Premier ETF Indonesia Stated-Owned Companies

Rekomendasi: Buy

---Candle ditutup diatas EMA50 dengan membentuk pola inverted hammer yang merupakan sinyal bullish reversal, stochastic netral, MACD histogram divergence negatif. Target kenaikan harga pada level 757 kemudian 763 dengan *support* di level 745, *cut loss* jika *break* 738.

XISC (751)

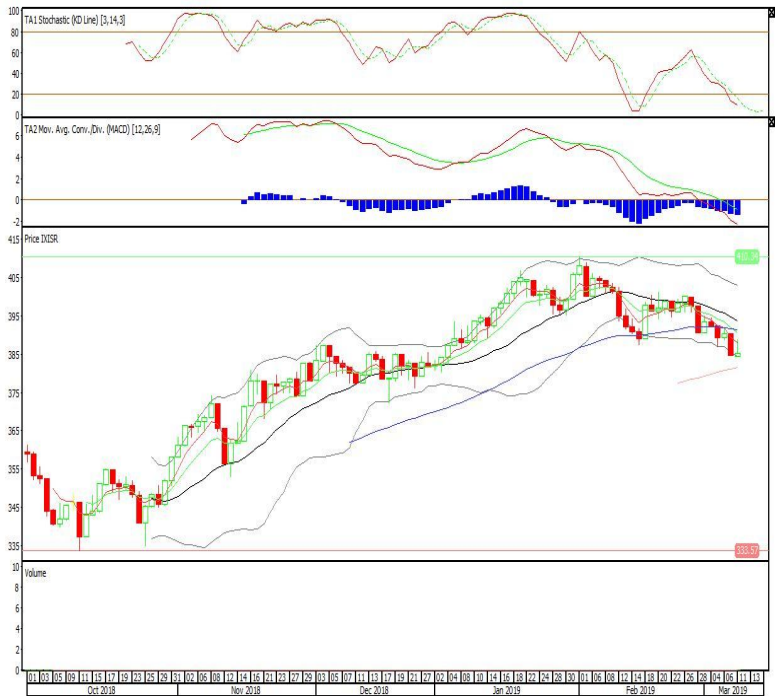


Premier ETF SRI-KEHATI

Rekomendasi: Buy

---Candle ditutup diatas lower band dengan membentuk pola inverted hammer yang merupakan sinyal bullish reversal, stochastic oversold, MACD histogram divergence negatif. Target kenaikan harga pada level 387 kemudian 390 dengan *support* di level 382, *cut loss* jika *break* 379.

XISR (385)



Head Office**PT INDO PREMIER SEKURITAS**

Wisma GKBI 7/F Suite 718

Jl. Jend. Sudirman No.28

Jakarta 10210 - Indonesia

p +62.21.5793.1168

f +62.21.5793.1167

ANALYSTS CERTIFICATION.

The views expressed in this research report accurately reflect the analyst's personal views about any and all of the subject securities or issuers; and no part of the research analyst's compensation was, is, or will be, directly or indirectly, related to the specific recommendations or views expressed in the report.

DISCLAIMERS

This research is based on information obtained from sources believed to be reliable, but we do not make any representation or warranty nor accept any responsibility or liability as to its accuracy, completeness or correctness. Opinions expressed are subject to change without notice. This document is prepared for general circulation. Any recommendations contained in this document does not have regard to the specific investment objectives, financial situation and the particular needs of any specific addressee. This document is not and should not be construed as an offer or a solicitation of an offer to purchase or subscribe or sell any securities. PT. Indo Premier Sekuritas or its affiliates may seek or will seek investment banking or other business relationships with the companies in this report.