

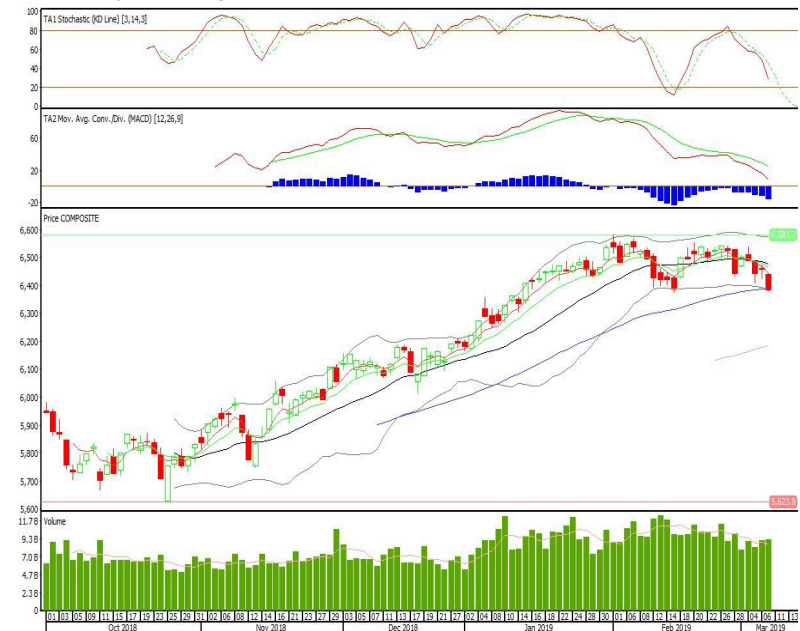
## Technical Corner

### IHSG

**Range: 6.330–6.440**

---Indeks ditutup black opening marubozu yang merupakan sinyal bearish continuation, stochastic netral dan MACD histogram divergence negatif. Target pelemahan indeks pada level 6.330 kemudian 6.290 dengan *resist* di level 6.440 dan 6.490.

### IHSG (6.383)



### H.M. Sampoerna

**Rekomendasi: Buy on Weakness**

---Candle ditutup di bawah MA20 dan membentuk pola doji yang merupakan sinyal indecision, stochastic netral dan MACD bearish cross over. Target harga beli pada level 3.720 dengan *resist* di level 3.820 kemudian 3.880.

### HMSP (3.770)



**Jasa Marga**

**Rekomendasi: Buy on Weakness**  
 ---Candle ditutup di bawah MA20 dan membentuk pola spinning top yang merupakan sinyal indecision, stochastic netral dan MACD bearish cross over. Target harga beli pada level 5.000 dengan *resist* di level 5.150 kemudian 5.225.

**JSMR (5.075)**



**Krakatau Steel**

**Rekomendasi: Buy**  
 ---Candle ditutup diatas EMA5,10 dengan membentuk pola small bullish candle, stochastic netral, MACD histogram convergence positif. Target kenaikan harga pada level 488 kemudian 492 dengan *support* di level 480, *cut loss* jika *break* 476.

**KRAS (484)**

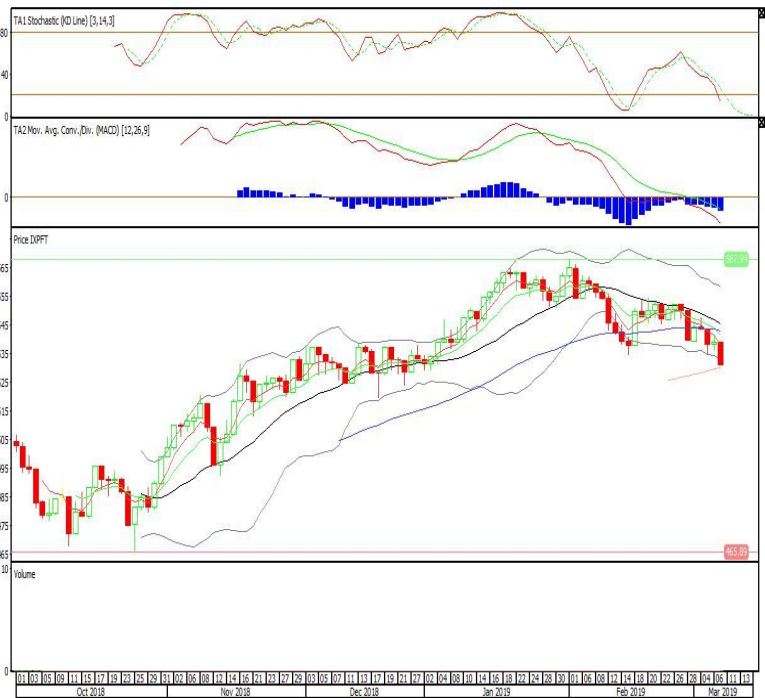


**Pinnacle FTSE Indonesia ETF**

**Rekomendasi: SELL**

---Candle ditutup dibawah EMA50 dengan membentuk pola black marubozu yang merupakan sinyal bearish continuation, stochastic oversold, MACD histogram divergence negatif. Target pelemahan harga pada level 524 kemudian 517 dengan *resist* di level 538 dan 546.

**XPFT (530)**

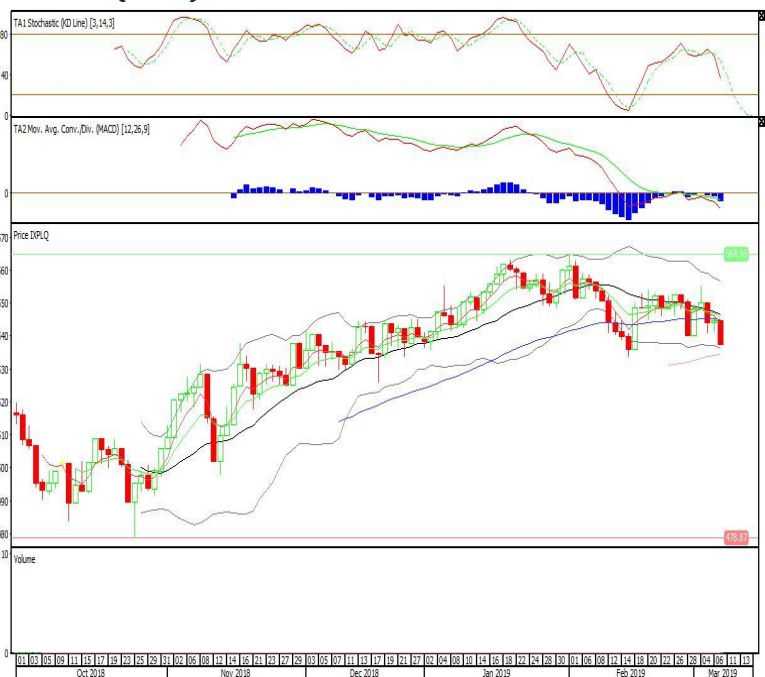


**Pinnacle Enhanced Liquid ETF**

**Rekomendasi: SELL**

---Candle ditutup dibawah EMA50 dengan membentuk pola black marubozu yang merupakan sinyal bearish continuation, stochastic netral, MACD histogram divergence negatif. Target pelemahan harga pada level 530 kemudian 522 dengan *resist* di level 544 dan 552.

**XPLQ (537)**

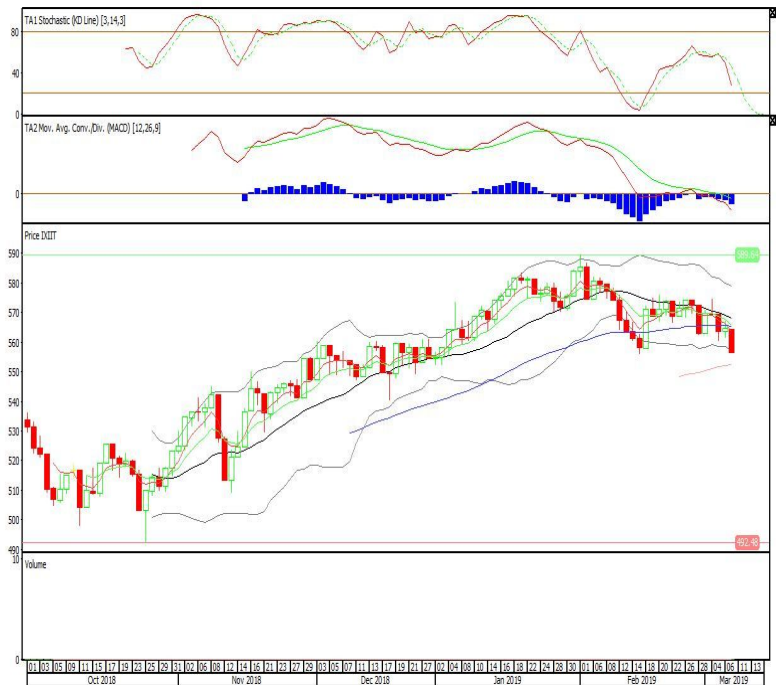


Premier ETF IDX30

**Rekomendasi: SELL**

---Candle ditutup dibawah EMA50 dengan membentuk pola black marubozu yang merupakan sinyal bearish continuation, stochastic netral, MACD histogram divergence negatif. Target pelemahan harga pada level 548 kemudian 540 dengan *resist* di level 564 dan 572.

**XIIT (556)**



**Head Office****PT INDO PREMIER SEKURITAS**

Wisma GKBI 7/F Suite 718

Jl. Jend. Sudirman No.28

Jakarta 10210 - Indonesia

p +62.21.5793.1168

f +62.21.5793.1167

**ANALYSTS CERTIFICATION.**

The views expressed in this research report accurately reflect the analyst's personal views about any and all of the subject securities or issuers; and no part of the research analyst's compensation was, is, or will be, directly or indirectly, related to the specific recommendations or views expressed in the report.

**DISCLAIMERS**

This research is based on information obtained from sources believed to be reliable, but we do not make any representation or warranty nor accept any responsibility or liability as to its accuracy, completeness or correctness. Opinions expressed are subject to change without notice. This document is prepared for general circulation. Any recommendations contained in this document does not have regard to the specific investment objectives, financial situation and the particular needs of any specific addressee. This document is not and should not be construed as an offer or a solicitation of an offer to purchase or subscribe or sell any securities. PT. Indo Premier Sekuritas or its affiliates may seek or will seek investment banking or other business relationships with the companies in this report.