

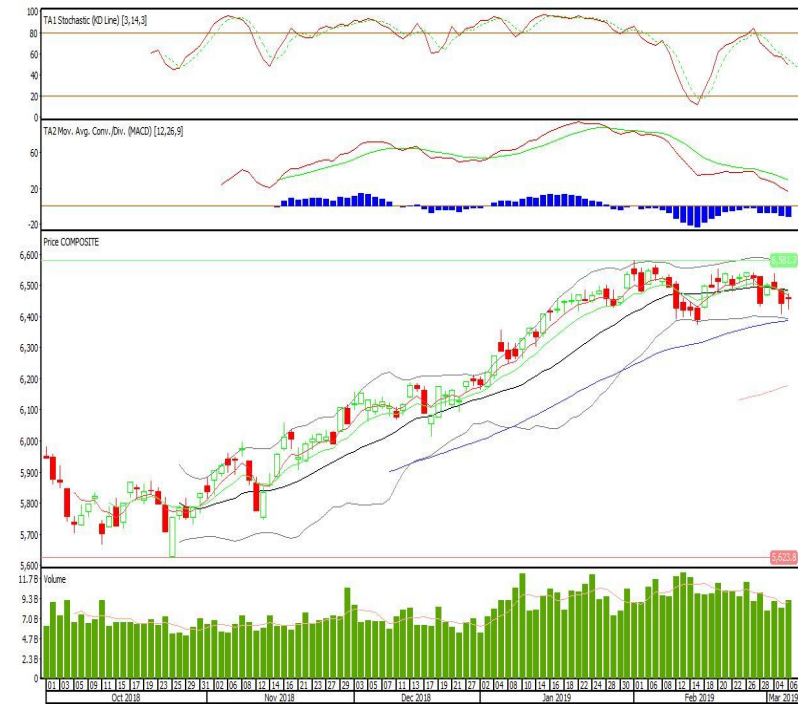
Technical Corner

IHSG

Range: 6.425–6.490

---Indeks kembali ditutup di bawah MA20 namun dengan membentuk pola doji yang merupakan sinyal indecision, stochastic netral dan MACD histogram divergence negatif. Target pelemahan indeks pada level 6.425 kemudian 6.385 dengan resist di level 6.490 kemudian 6.525.

IHSG (6.458)



Mitra Adiperkasa

Rekomendasi: Buy

---Candle ditutup di atas MA20 dan membentuk pola hammer yang merupakan sinyal bullish reversal, stochastic netral sedangkan MACD histogram divergence negatif. Target kenaikan harga pada level 1.065 kemudian 1.085 dengan support di level 1.025, cut loss jika break 1.000.

MAPI (1.045)

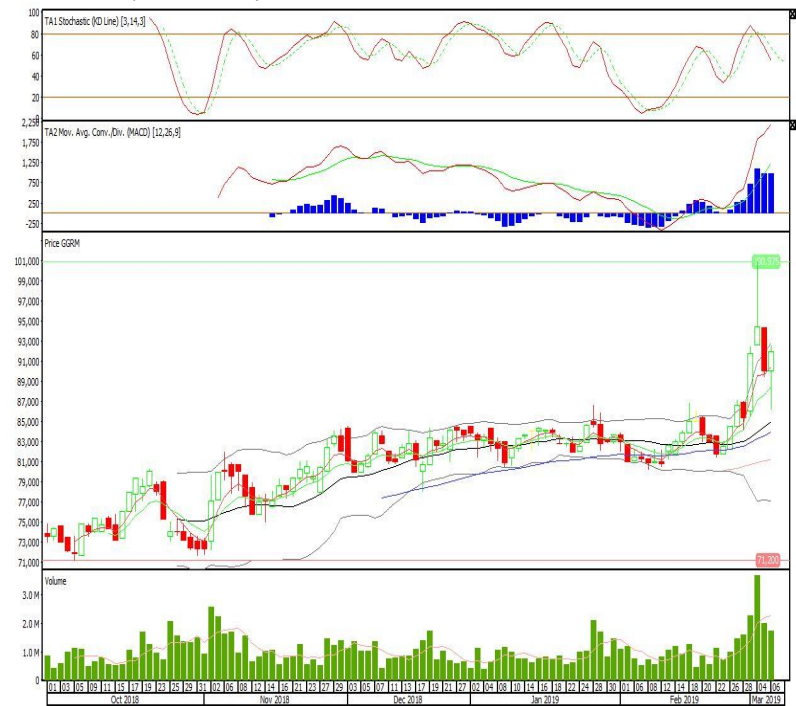


Gudang Garam

Rekomendasi: Buy

---Candle ditutup di atas EMA5,10 dan membentuk pola long white marubozu yang merupakan sinyal bullish continuation, stochastic netral sedangkan MACD histogram convergence positif. Target kenaikan harga pada level 94.300 kemudian 97.150 dengan *support* di level 89.425, *cut loss* jika *break* 87.125.

GGRM (92.000)

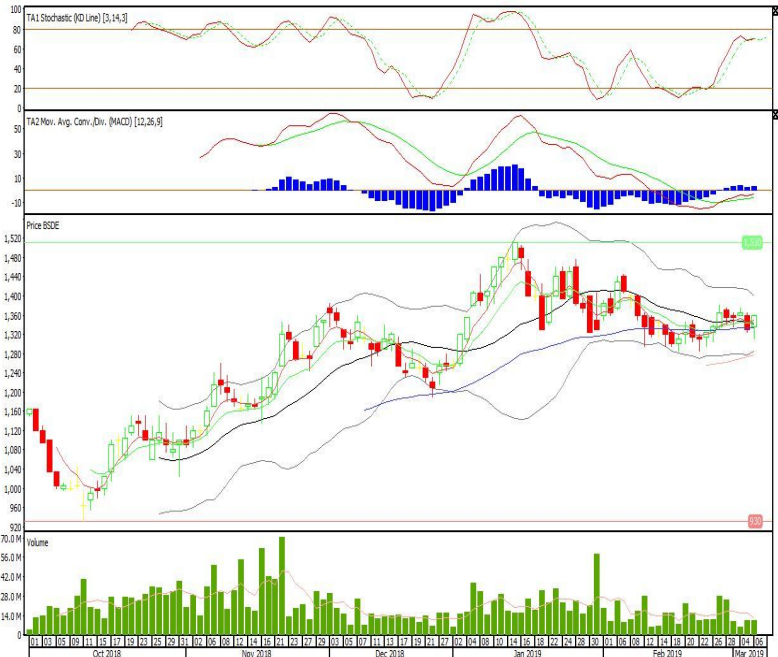


Bumi Serpong Damai

Rekomendasi: Buy

---Candle ditutup diatas EMA5,10 dengan membentuk pola white closing marubozu yang merupakan sinyal bullish continuation, stochastic netral, MACD histogram divergence positif. Target kenaikan harga pada level 1.385 kemudian 1.410 dengan *support* di level 1.335, *cut loss* jika *break* 1.310.

BSDE (1.360)

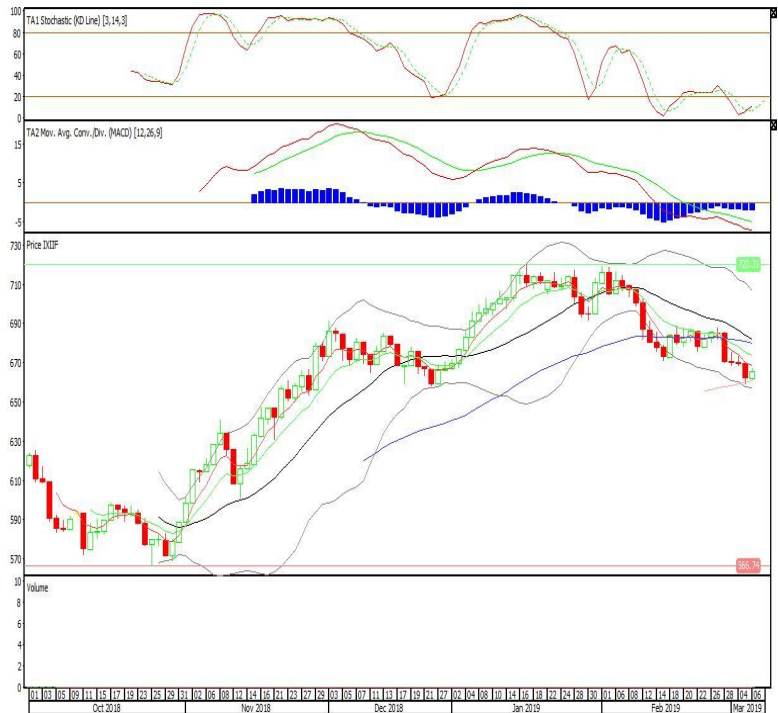


Premier ETF Indonesia Financial

Rekomendasi: Buy on Weakness

---Candle ditutup dibawah EMA5 dengan membentuk pola small bullish candle, stochastic oversold, MACD histogram divergence negatif. Target harga beli pada level 661 dengan *resist* di level 669 dan 674.

XIIF (665)

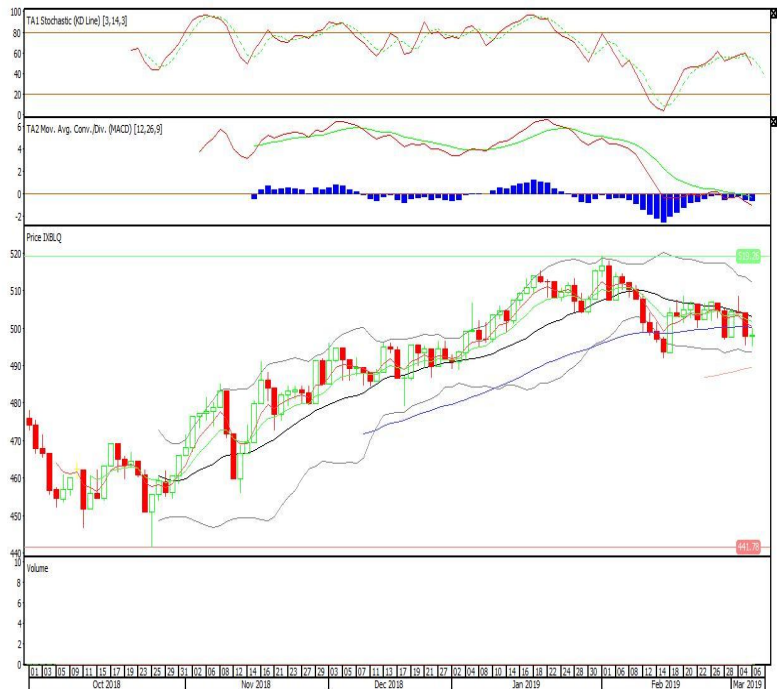


Batavia Smart Liquid ETF

Rekomendasi: Buy on Weakness

---Candle ditutup dibawah EMA50 dengan membentuk pola bullish doji yang merupakan sinyal bullish reversal, stochastic netral, MACD histogram divergence negatif. Target harga beli pada level 495 dengan *resist* di level 500 dan 503.

XBLQ (498)

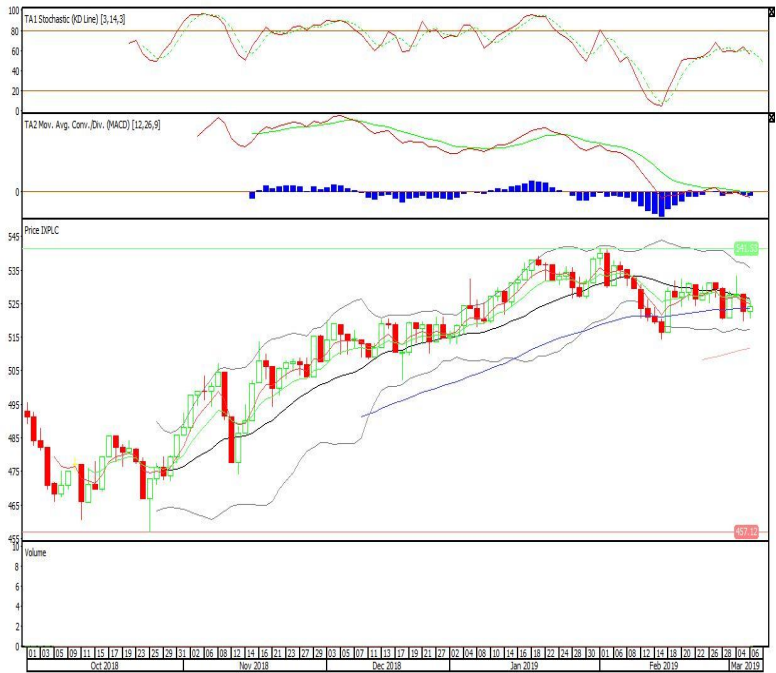


Pinnacle Indonesia Large-Cap ETF

Rekomendasi: Buy on Weakness

---Candle ditutup diatas EMA50 dengan membentuk pola small bullish candle, stochastic netral, MACD histogram divergence negatif. Target harga beli pada level 520 dengan *resist* di level 526 dan 529.

XPLC (523)



Head Office**PT INDO PREMIER SEKURITAS**

Wisma GKBI 7/F Suite 718

Jl. Jend. Sudirman No.28

Jakarta 10210 - Indonesia

p +62.21.5793.1168

f +62.21.5793.1167

ANALYSTS CERTIFICATION.

The views expressed in this research report accurately reflect the analyst's personal views about any and all of the subject securities or issuers; and no part of the research analyst's compensation was, is, or will be, directly or indirectly, related to the specific recommendations or views expressed in the report.

DISCLAIMERS

This research is based on information obtained from sources believed to be reliable, but we do not make any representation or warranty nor accept any responsibility or liability as to its accuracy, completeness or correctness. Opinions expressed are subject to change without notice. This document is prepared for general circulation. Any recommendations contained in this document does not have regard to the specific investment objectives, financial situation and the particular needs of any specific addressee. This document is not and should not be construed as an offer or a solicitation of an offer to purchase or subscribe or sell any securities. PT. Indo Premier Sekuritas or its affiliates may seek or will seek investment banking or other business relationships with the companies in this report.