

# Technical Corner

28 Oktober 2019

## IHSG

**Range: 6.205 - 6.290**

---Indeks meskipun ditutup dengan membentuk pola long black marubozu yang merupakan sinyal bearish continuation namun masih bertahan di atas EMA5,10, stochastic overbought dan MACD histogram convergence positif. Target kenaikan indeks pada level 6.290 kemudian 6.330 dengan *support* di level 6.205 dan 6.170.

## IHSG (6.252)



## Gudang Garam

**Rekomendasi: Buy**

---Candle ditutup bertahan di atas EMA5,10 dan membentuk pola small bullish candle, stochastic netral dan MACD histogram divergence positif. Target kenaikan harga pada level 56.450 kemudian 58.650 dengan *support* di level 53.100, *cut loss* jika *break* 51.375.

## GGRM (54.650)



**Global Mediacom**

**Rekomendasi: Buy**

---Candle ditutup dengan membentuk pola doji yang merupakan sinyal indecision, stochastic overbought dan MACD histogram divergence positif. Target kenaikan harga pada level 414 kemudian 426 dengan *support* di level 392, *cut loss* jika *break* 382.

**BMTR (404)**



**Ace Hardware Indonesia**

**Rekomendasi: Buy**

---Candle ditutup di atas MA20 dengan membentuk pola hammer yang merupakan sinyal bullish reversal, stochastic netral, MACD histogram divergence negatif. Target kenaikan harga pada level 1.820 kemudian 1.830 dengan *support* di level 1.790, *cut loss* jika *break* 1.780.

**ACES (1.810)**

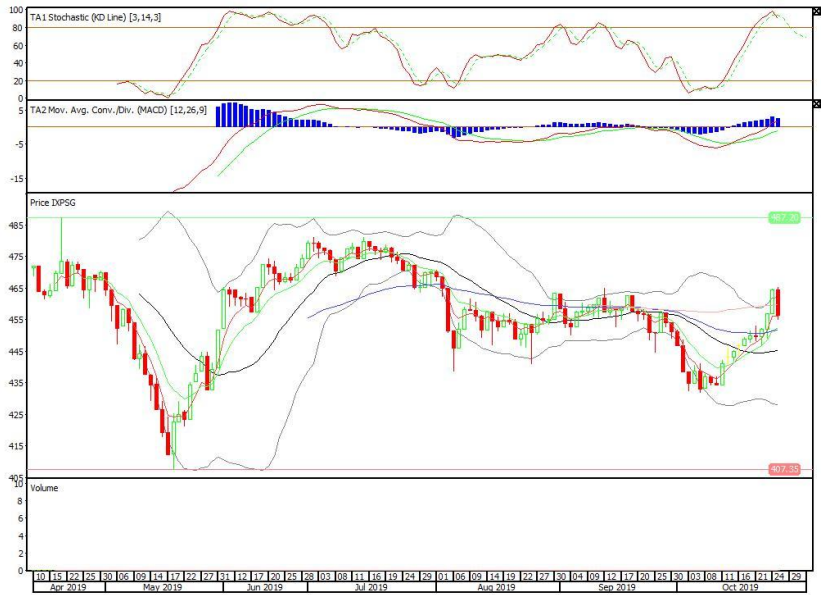


**Pinnacle Indonesia ESG ETF**

**Rekomendasi: SELL**

---Candle ditutup di bawah MA100 dengan membentuk pola long black marubozu yang merupakan sinyal bearish continuation, stochastic overbought, MACD histogram convergence positif. Target pelemahan harga pada level 448 kemudian 440 dengan *resist* di level 464 dan 472.

**XPSG (456)**

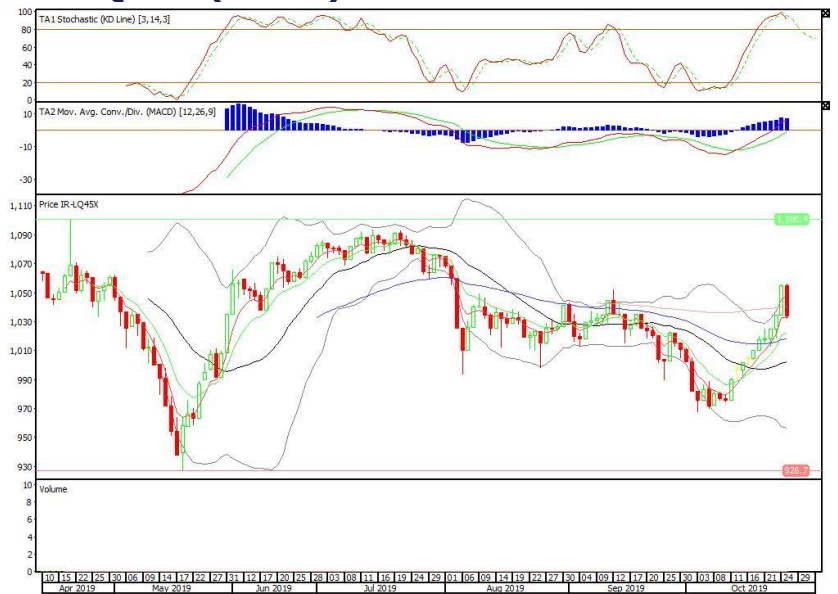


**Premier ETF LQ-45**

**Rekomendasi: SELL**

---Candle ditutup di bawah MA100 dengan membentuk pola long black marubozu yang merupakan sinyal bearish continuation, stochastic overbought, MACD histogram convergence positif. Target pelemahan harga pada level 1.012 kemudian 991 dengan *resist* di level 1.054 dan 1.076.

**R-LQ45X (1.033)**

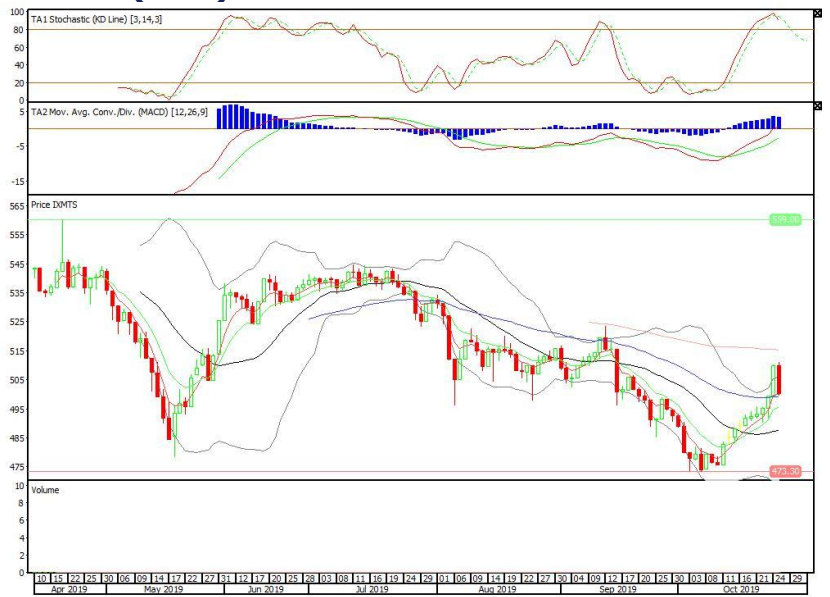


**ETF MNC36 Likuid**

**Rekomendasi: SELL**

---Candle ditutup di bawah MA100 dengan membentuk pola long black marubozu yang merupakan sinyal bearish continuation, stochastic overbought, MACD histogram convergence positif. Target pelemahan harga pada level 490 kemudian 481 dengan *resist* di level 509 dan 519.

**XMTS (500)**



**Head Office****PT INDO PREMIER SEKURITAS**

Pacific Century Place 16/F, SCBD Lot 10

Jl. Jend. Sudirman Kav.52-53

Jakarta 12190 - Indonesia

p +62.21.5088.7200

**ANALYSTS CERTIFICATION.**

The views expressed in this research report accurately reflect the analyst's personal views about any and all of the subject securities or issuers; and no part of the research analyst's compensation was, is, or will be, directly or indirectly, related to the specific recommendations or views expressed in the report.

**DISCLAIMERS**

This research is based on information obtained from sources believed to be reliable, but we do not make any representation or warranty nor accept any responsibility or liability as to its accuracy, completeness or correctness. Opinions expressed are subject to change without notice. This document is prepared for general circulation. Any recommendations contained in this document does not have regard to the specific investment objectives, financial situation and the particular needs of any specific addressee. This document is not and should not be construed as an offer or a solicitation of an offer to purchase or subscribe or sell any securities. PT. Indo Premier Sekuritas or its affiliates may seek or will seek investment banking or other business relationships with the companies in this report.